

# WHO ARE DRUG USERS IN THE NETHERLANDS?

Hendrien Kaal, Centrum voor Drugsonderzoek Universiteit van Amsterdam

An analysis of the Dutch National Drug Prevalence data in order to characterize 'the Dutch drug user', reveals that drug users tend to be young, male, single, and either working or in daytime education. However, drug use is certainly not limited to these groups. With regards to level of education and income, drug users are not much different from their contemporaries. The main distinguishing characteristics of drug users is that they have more of a social life are more pleasure seeking. In all, one must conclude that drugs are used by a wide range of different people who do not differ greatly from non-drug using people.

## 1. Introduction

This paper aims to give an insight in the type of people who use drugs in the Netherlands. Two questions will be addressed: are drug users very different from non-drug users? And are the users of different types of drugs different from each other? The paper is based on the data of the National Drug Prevalence study, conducted by CEDRO in 1997<sup>1</sup>. The study included around 22,000 respondents of 12 year and older, who were randomly selected using the Municipal Population Registry. Five drug types are looked at: cannabis, cocaine, amphetamines, Ecstasy and mushrooms. Besides alcohol and tobacco, these are the most commonly used recreational drugs in the Netherlands. The following text presents the main findings of an analysis of the prevalence data, the tables which support these findings can be found at the end.

## 2. Prevalence

The CEDRO prevalence study showed that just over 15% of all Dutch people over 12 years old in 1997 had ever had any experience with cannabis, while around two percent of the population had ever used cocaine, Ecstasy or amphetamines. The proportion of people who have used drugs in the last year, or even in the last month is substantially lower; for cannabis this was 4.5% and 2.5% respectively, for the other drugs this was 0.3-0.7% and 0.1-0.3% respectively (Table 1). Those respondents who indicated they used a drug in the last 30 days before the interview were asked how many days in the last month they had used this particular drug (Table 2). Again, it was found that those using drugs frequently are a minority. Cannabis and amphetamines were used more frequently than cocaine, Ecstasy and mushrooms. For the latter excessive use was found to be rare, and although a

substantial proportion of cannabis and amphetamine users used more than 20 days in the last month (26% and 16% respectively), the vast majority of users use drugs much less often.

## 3. Age and length of use

Drug users tend to be young people (Table 3). They tend to start at a relatively young age, but most seem to stop when they are still relatively young as well. This seems to be most strikingly so for cannabis. Almost 60 per cent of all cannabis users started use between the ages 15 to 19; around 90 per cent of cannabis users started to use before they were 25 years old. The average age of first use of cannabis was just over 19 years old. At the same time, over 80 per cent of all cannabis users quit using between the ages 15 to 29. More than 40 per cent of all ex-cannabis users in the sample used for less than a year; only eight percent used cannabis for longer than ten years. The average age of last use was nearing 23 years old. The average length of use of those who had stopped using cannabis was just over three years. Frequent users started use at an earlier age (17.2) and used for a longer period of time (7.7 years cf. 2.0 years).

Similar patterns to that for cannabis use are found for cocaine, Ecstasy, amphetamines and mushrooms (Figures 1 and 2). Their use is often started at a slightly later age (around 21 years old for amphetamines and nearing 23 for cocaine, Ecstasy and mushrooms), and similarly stopped at a later age (between 23 years old for amphetamines and 26 for cocaine). The average length of use is shorter than for cannabis: the average length of the use of cocaine is nearing three years, amphetamines are on average used for no longer than two-and-a-half years and Ecstasy and mushrooms are used for just over a year. Of course there are exceptions to

the pattern just sketched: the maximum length of use reported varies between 19 years for Ecstasy and mushrooms and 43 years for amphetamines. However, overall the idea that drug users are predominantly young people who use drugs for a limited number of years seems to hold for all five drugs considered here.

All figures thus far suggest that, although some might conclude that the proportion of the population of 12 years and older who experimented with drugs is relatively high, only a minority of those who ever experiment with drug use go on to use drugs for a long time or intensively.

#### 4. Drug use by address density (a.d.)

Drug use patterns are not the same everywhere. Looking at population density and certain cities in particular, reveals that drug use is more common in Amsterdam than anywhere else, and that the more densely populated an area, the higher the drug prevalence rates. (Table 4). Age of first use of cannabis is similar in the different strata (Table 5), but people in the more densely populated areas tend to stop using cannabis at a later age (Table 6). For other drugs this pattern is not as clearly visible – which can be the result of the small numbers – but seems to be not entirely absent. Also when looking at the length of drug using careers, only for cannabis a difference between strata is clearly discernible (Tables 7 and 8). The frequency of last month use is also not strikingly different between the strata (Table 9, Figure 3), which shows that although the prevalence rates might be different, in all strata the conclusion holds strong that most drug users are not long term, frequent users.

#### 5. Other drug use

Most people in the Netherlands have experience with alcohol and tobacco. The first two columns of Table 10 show that amongst drug users this is even more so: it is very rare for drug users to have no experience with alcohol or tobacco. In general it is true that users of one type of drugs, tend to have experience with other types of drugs more often than non-users. Especially cannabis use is very widespread amongst drug users in general. Only around 10% of other drug users have not at some point in their lives used cannabis. However, if we look at the drug use patterns of cannabis users, we see that only a minority of cannabis users has experience with other drugs.

For alcohol and tobacco data are also available on the frequency of use (Tables 11 and 12; Figures 4 and 5). Drug users who do consume alcohol drink more glasses a day than non-drug users. This pattern is least visible for cannabis, and clearest for cocaine users. However, at the same time the diagrams show that alcohol consumption patterns do not vary as widely as some might have expected. Excessive use of alcohol is relatively rare in all groups. The

fact that drug users seem to use slightly more alcohol also means that we found no evidence that drug use replaces alcohol use. When looking at the number of cigarettes smoked per day we see that there the difference is even smaller – more drug users smoke than non-drug users, but they do not seem to smoke substantially more.

#### 6. Gender

Drug users seem to be predominantly male: in each user category men dominate, and this is even more so amongst frequent users (Table 13). This difference exists in all age groups. With regard to cannabis, women tend to start use at a later age than men. They stop using around the same age, and consequently use for shorter period of time than men. A similar pattern was found for some of the other drugs, although only very few differences were significant (Table 14). Although more men than women use drugs, those women who do use seem to use just as frequently as male users: no statistically significant difference was found between intensity of use during the last month.

#### 7. Partners and marital status

Drug users less often have partners than not-users. With regard to drugs other than cannabis, people who did use drugs but do not do so anymore are also less likely to have partners than people who never used drugs, but to a lesser extent than people who used in the last year. There is no clear pattern of difference between those who use frequently and those who have only experimented with drugs: for cannabis and cocaine, frequent users have more often got partners than experimenters; for Ecstasy and amphetamines it's the other way around. There is no clear pattern at all for mushrooms (Table 16).

Drug users are more often not married than non-users; this is not only true for current users, but holds true – to a lesser extent – for past users as well. Frequent cannabis, cocaine, and mushroom users seem to have divorced more often than not users, as have experimental ex-users of cannabis, cocaine, Ecstasy, and amphetamines. Hardly any drug users have been widowed, but this has most likely to do with the average age of drug users. (Table 17)

Both having a partner and marital status are strongly related to age. It could therefore be that the difference found is not an actual difference between drug users and not-drug users, but the result of the fact that drug use is age-related too. To check whether this is the case we can look whether the same pattern recurs in different age categories (Table 18). This has only been done for cannabis, as the cell sizes for the other drugs would be too small to be able to draw any firm conclusions. Generally the patterns within the age groups are similar to what was described above. Especially with cannabis (the only drug with sufficient numbers in the groups to draw firm conclusions) the pattern is clear and consistent

in most age groups: past users less often have a partner than not-users, and recent users less again. Furthermore, frequent users seem to have partners less often than experimenters. If we look at the relationship between marital status and drug use by age category, we see that drug users are indeed less often married than not-drug users, and that they are more often single, and generally more often divorced than not-users. As was found before, hardly any drug users have been widowed, even if we only look at the older age categories in which widowhood is not so rare.

Only in the age group 20-24 we see some exceptions: frequent past use of cannabis, cocaine, and ecstasy and experimental past use of amphetamines is associated with more people having a partner. It could be that the relationship is the cause of drug use having stopped in this age group, but we cannot check this with our data. Another abnormality in this age group is that occasional current Ecstasy users more often seem to have partners than non-users, whereas much fewer regular current users have partners.

## 8. Main activity

When looking at the main occupation of time (Table 19), one sees that drug users more often spend their time on paid labour than non-users, frequent users of cannabis and Ecstasy a bit more than experimenters. Drug use is relatively rare amongst those responsible for housekeeping and those doing voluntary work. Like marital status, occupation of time is strongly related to age – the higher the age the lower the proportion in education and the higher the proportion occupied with housekeeping. Again, age-group tables have been produced for cannabis. This showed that although the differences do not disappear altogether, they are much less strongly present within each age-group (Table 20).

## 9. Level of education

Of the different main activities mentioned in the last paragraph, education was looked at in more depth. At first sight it seems that, apart from cocaine users, current drug users are more often enrolled in day-time education than non-users, and that frequent users are slightly less often in education than experimenters (Table 21). However, since there is a strong link between education and age group, a look at education by age-group is necessary (Table 22). This shows that there are differences between users and not users, but that the patterns differ by age group and drug type. In the younger age groups the trend seems to be that current frequent users are less often in day-time education than non-(frequent) users. In the older age groups for cannabis the pattern is that users are more often in education than not-users, but frequent users less so. For the other drug types, the groups are rather small, which makes it difficult to draw conclusions, but for Ecstasy and

amphetamines it seems that current users are generally less often in education than non-users (especially frequent current users 25-29 y.), whereas current frequent cocaine users are more often in education.

Drug use of those in education by drug type has been shown twice: once emphasising the education of the different groups of users (Table 23), and once emphasising the drug patterns in each of the school types (Table 24). These seem to show that users can relatively often be found at MBO/HBO (medium and higher level of vocational education); at University level (WO) we only find relatively more experimenters. Relatively, drug use is lowest in LO (primary school level), and highest in MAO (medium level general education). LBO (low level vocational education) students are relatively more often frequent cocaine, ecstasy and mushroom users; HBO/WO educated have slightly more often past (experimental) knowledge of drugs. Again there is some relationship with age, as the higher age groups are on average in the highest levels of education, and tables by age group have been produced to see whether this would explain some of the differences found (Table 25). It was found that, when corrected for age, the differences between the levels of current education more or less disappear.

## 10. Income

Drug users are relatively rarely in the poorest class. Recent users are more often in the lower income brackets than non-users. Past users are more often in the higher income brackets than non-users. (Table 25) However, this might have to do with the fact that users are often young, while past users might be older, and income is age-related. For cannabis at least, the pattern seems to more or less disappear when looking by age-group (Table 26). If anything, it seems that the older ex-users and experimenters are slightly better off than those who have never even tried cannabis. However, in general what really seems to stand out is that the differences are much smaller than the similarities.

## 11. Social life

Drug users tend to go out more than non-drug users: they make more social visits to people and spend less evenings at home (Tables 27 and 28). This also shows with other pleasure seeking behaviour, such as visiting restaurants and cafe's or pubs (Tables 29 and 30). These differences remain when we correct for age: in most age categories we find that drug users go out more than their non-drug using contemporaries (Tables 31 and 32). However, by no means should we conclude that their pleasure seeking behaviour is excessive - differences clearly exist, but are not extremely large.

## 12. Conclusion

Most drug users use drugs for a relatively short period of time and never use drugs intensively. Prevalence rates vary throughout the country, but the proportion of people who use frequently is stable.

There is quite some overlap between cocaine, Ecstasy, amphetamines and mushroom use, and most users of these drugs have used cannabis. Hardly any have tried heroin. At the same time, only a minority of cannabis users tries at any point any other, illicit, drug.

Drug users tend to be young and male, and are more often single than non-users, although it is by no means an exception that they are in a relationship. They tend to be slightly more often in paid labour or in education, but in these respects they are not very

different from their contemporaries. They are not particularly badly or well educated and do not earn particularly much or little.

Drug users do seem to have a more intensive social life and go out more; drug use seems to be quite strongly related to other pleasure seeking behaviour, even when corrected for age. Other than that, one would have to conclude on the basis of this analysis that drugs users are really quite ordinary people...

<sup>1</sup> ABRAHAM, M.D., P.D.A. COHEN, R.J. VAN TIL AND M.A.L. DE WINTER (1999) *Licit and Illicit Drug Use in The Netherlands, 1997*, Amsterdam: CEDRO/Mets.

**Table 1.** Prevalence figures population 12 years and over

|                               | <i>Cannabis</i> |        | <i>Cocaine</i> |        | <i>Ecstasy</i> |        | <i>Amphetam.</i> |        | <i>Mushrooms</i> |        |
|-------------------------------|-----------------|--------|----------------|--------|----------------|--------|------------------|--------|------------------|--------|
|                               | %               | unw. n | %              | unw. n | %              | unw. n | %                | unw. n | %                | unw. n |
| Lifetime prevalence           | 15.6            | 4574   | 2.1            | 720    | 1.9            | 625    | 1.9              | 584    | 1.6              | 572    |
| Last year prevalence          | 4.5             | 1642   | 0.6            | 216    | 0.7            | 271    | 0.3              | 219    | 0.6              | 233    |
| Last month prevalence         | 2.5             | 903    | 0.2            | 81     | 0.3            | 95     | 0.1              | 52     | 0.1              | 47     |
| % of users who used >25 times | 33              | 1655   | 23             | 169    | 25             | 146    | 33               | 180    | 4.6              | 24     |

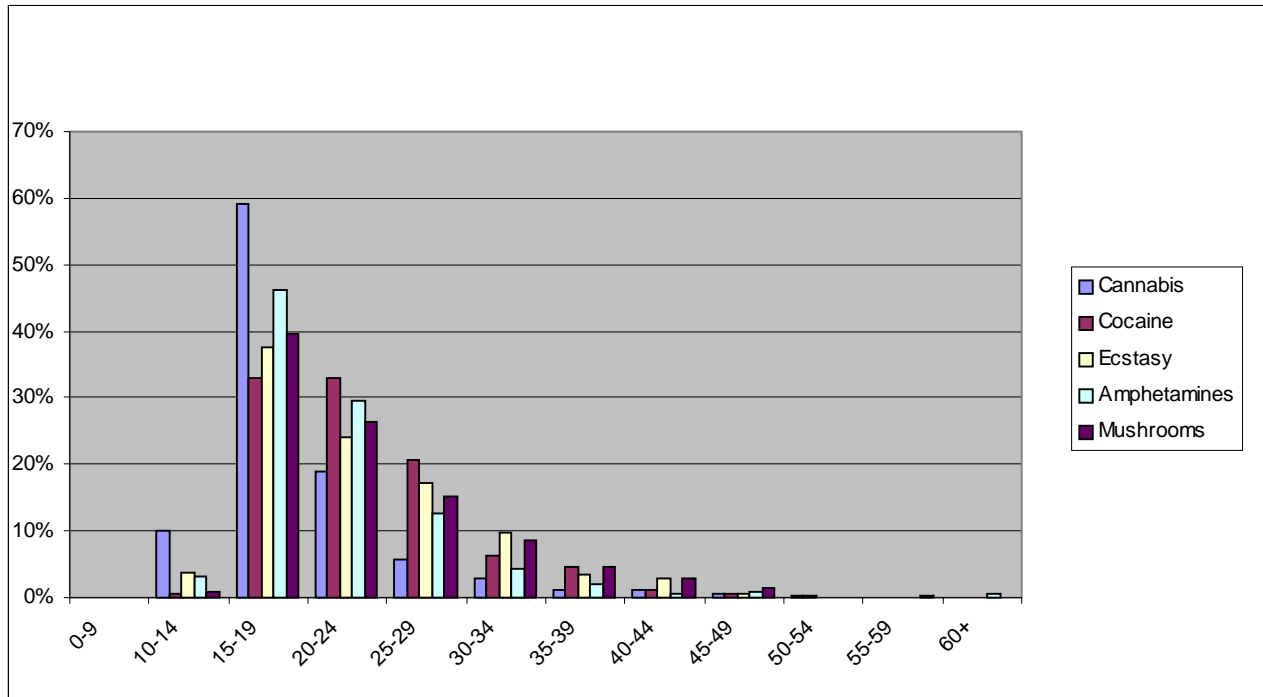
**Table 2.** Number of last thirty days in which drug was used (% of all who used in last month)

|              | <i>Cannabis</i> | <i>Cocaine</i> | <i>Ecstasy</i> | <i>Amphetam.</i> | <i>Mushrooms</i> |
|--------------|-----------------|----------------|----------------|------------------|------------------|
| 1 - 4 days   | 45.1            | 91.0           | 97.1           | 58.8             | 97.0             |
| 5 - 8 days   | 13.8            | 3.0            | 2.1            | 19.6             | 0.9              |
| 9 - 14 days  | 8.8             | 1.7            | 0.8            | 2.2              | 2.1              |
| 15 - 20 days | 6.6             | 2.5            | -              | 3.9              | -                |
| > 20 days    | 25.6            | 1.8            | -              | 15.5             | -                |
| Unw. N       | 901             | 80             | 95             | 52               | 47               |

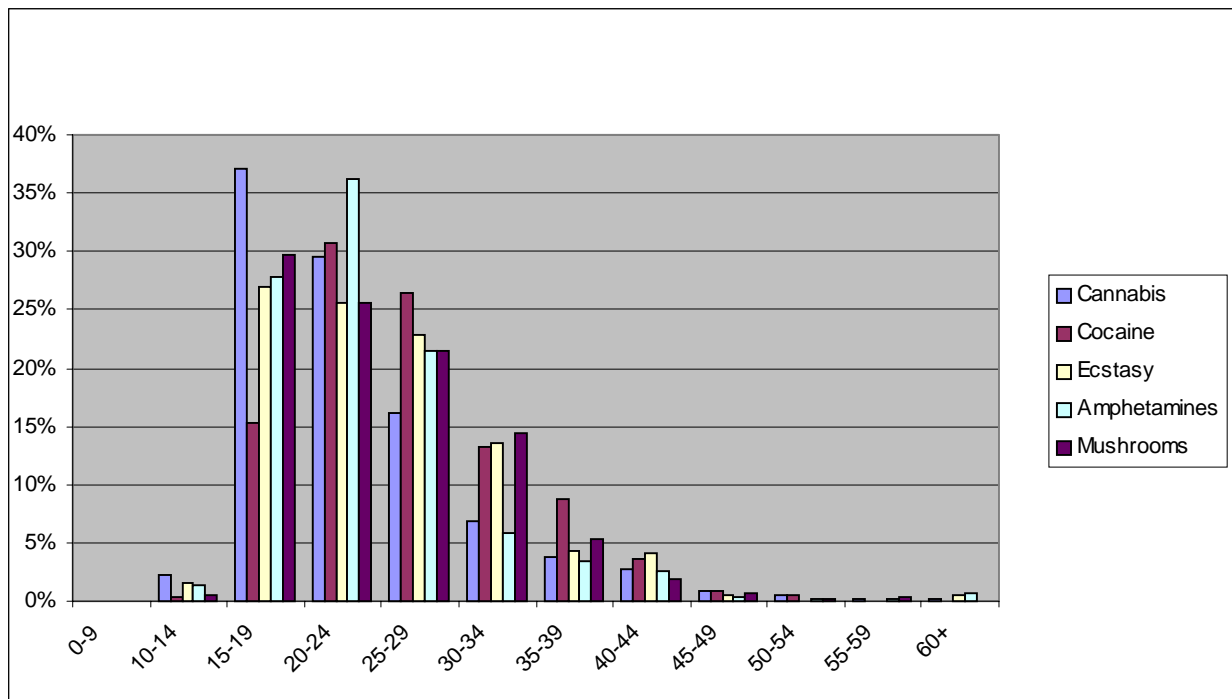
**Table 3.** Age and length of use by experience of drug use (used more or less than 25 times).

|                    |                   | <i>Cannabis</i> |          | <i>Cocaine</i> |          | <i>Ecstasy</i> |          | <i>Amphetam.</i> |          | <i>Mushrooms</i> |          |
|--------------------|-------------------|-----------------|----------|----------------|----------|----------------|----------|------------------|----------|------------------|----------|
|                    |                   | Years           | (Unw. N) | Years          | (Unw. N) | Years          | (Unw. N) | Years            | (Unw. N) | Years            | (Unw. N) |
| Age first use      | <25               | 20.3            | (2853)   | 23.2           | (545)    | 24.3           | (471)    | 21.7             | (394)    | 23.1             | (542)    |
|                    | >25               | 17.2            | (1649)   | 21.9           | (166)    | 19.2           | (146)    | 19.3             | (178)    | 19.6             | (22)     |
|                    | <i>difference</i> | 3.1             |          | 1.3            |          | 5.1            |          | 2.4              |          | 3.5              |          |
| Age last use       | <25               | 22.2            | (2212)   | 25.6           | (413)    | 25.6           | (299)    | 23.3             | (325)    | 24.3             | (324)    |
|                    | >25               | 25.2            | (657)    | 29.2           | (83)     | 21.4           | (52)     | 23.4             | (121)    | 24.6             | (10)     |
|                    | <i>difference</i> | -3              |          | -3.6           |          | 4.2            |          | -0.1             |          | -0.3             |          |
| Length past use    | <25               | 2               | (2209)   | 2.1            | (412)    | 0.8            | (299)    | 1.6              | (325)    | 1                | (323)    |
|                    | >25               | 7.7             | (655)    | 7              | (81)     | 3.1            | (52)     | 4.5              | (120)    | 5.3              | (10)     |
|                    | <i>difference</i> | -5.7            |          | -4.9           |          | -2.3           |          | -2.9             |          | -4.3             |          |
| Length current use | <25               | 4.9             | (630)    | 3.8            | (131)    | 2.5            | (172)    | 1.5              | (68)     | 1.7              | (217)    |
|                    | >25               | 11.2            | (986)    | 9              | (84)     | 4.2            | (94)     | 10.9             | (58)     | 11.5             | (12)     |
|                    | <i>difference</i> | -6.3            |          | -5.2           |          | -1.7           |          | -9.4             |          | -9.8             |          |

## WHO ARE DRUG USERS IN THE NETHERLANDS?



**Figure 1:** Age of first use of drug



**Figure 2:** Age of last use of drug

**Table 4.** Prevalence figures by stratum / address density (a.d.)

|              |               | <i>Ever</i> | <i>Last year</i> | <i>Last month</i> | <i>Unw. N</i> | <i>&gt; 25 times</i> | <i>Unw. N</i> |
|--------------|---------------|-------------|------------------|-------------------|---------------|----------------------|---------------|
| Cannabis     | Amsterdam     | 36.7        | 13.2             | 8.1               | 3710          | 43.6                 | 1255          |
|              | Rotterdam     | 18.5        | 6.0              | 3.2               | 2319          | 40.9                 | 390           |
|              | Den Haag      | 20.1        | 6.5              | 4.3               | 2276          | 40.8                 | 441           |
|              | Utrecht       | 27.3        | 8.1              | 4.3               | 2198          | 33.0                 | 600           |
|              | Highest a.d.  | 23.3        | 7.2              | 4.0               | 2289          | 35.5                 | 543           |
|              | High a.d.     | 17.2        | 4.1              | 2.4               | 2294          | 33.1                 | 400           |
|              | Moderate a.d. | 12.6        | 3.5              | 1.8               | 2276          | 28.4                 | 295           |
|              | Low a.d.      | 12.3        | 3.7              | 1.8               | 2288          | 27.4                 | 320           |
|              | Lowest a.d.   | 10.5        | 3.1              | 1.5               | 2304          | 31.4                 | 287           |
|              | Total         | 15.6        | 4.5              | 2.5               | 21954         | 33.2                 | 4531          |
| Cocaine      | Amsterdam     | 9.4         | 2.6              | 1.0               | 3709          | 27.6                 | 317           |
|              | Rotterdam     | 3.5         | 1.0              | 0.4               | 2320          | 24.1                 | 62            |
|              | Den Haag      | 3.5         | 1.1              | 0.6               | 2278          | 27.3                 | 67            |
|              | Utrecht       | 3.4         | 0.9              | 0.3               | 2198          | 18.2                 | 76            |
|              | Highest a.d.  | 3.2         | 0.8              | 0.3               | 2289          | 20.6                 | 69            |
|              | High a.d.     | 1.8         | 0.3              | 0.1               | 2295          | 19.4                 | 37            |
|              | Moderate a.d. | 1.5         | 0.8              | 0.2               | 2276          | 23.2                 | 34            |
|              | Low a.d.      | 1.4         | 0.3              | 0.2               | 2288          | 18.8                 | 33            |
|              | Lowest a.d.   | 1.0         | 0.2              | 0.1               | 2304          | 23.7                 | 25            |
|              | Total         | 2.1         | 0.6              | 0.2               | 21957         | 22.7                 | 720           |
| Amphetamines | Amsterdam     | 5.9         | 0.9              | 0.3               | 3710          | 32.8                 | 200           |
|              | Rotterdam     | 2.7         | 0.2              | 0.1               | 2320          | 27.3                 | 55            |
|              | Den Haag      | 2.2         | 0.5              | 0.2               | 2278          | 35.7                 | 48            |
|              | Utrecht       | 2.5         | 0.6              | 0.3               | 2197          | 22.2                 | 58            |
|              | Highest a.d.  | 3.3         | 0.8              | 0.4               | 2289          | 27.8                 | 79            |
|              | High a.d.     | 1.9         | 0.4              | 0.1               | 2295          | 22.7                 | 44            |
|              | Moderate a.d. | 1.6         | 0.2              | 0.1               | 2276          | 27.4                 | 38            |
|              | Low a.d.      | 1.2         | 0.2              | 0.1               | 2288          | 60.0                 | 30            |
|              | Lowest a.d.   | 1.1         | 0.3              | 0.1               | 2304          | 41.5                 | 29            |
|              | Total         | 1.9         | 0.3              | 0.1               | 21957         | 33.1                 | 581           |
| Ecstasy      | Amsterdam     | 7.0         | 3.2              | 1.1               | 3710          | 18.1                 | 228           |
|              | Rotterdam     | 2.1         | 0.5              | 0.0               | 2320          | 27.8                 | 46            |
|              | Den Haag      | 2.5         | 0.8              | 0.2               | 2278          | 25.0                 | 63            |
|              | Utrecht       | 3.1         | 1.6              | 0.6               | 2198          | 20.0                 | 70            |
|              | Highest a.d.  | 2.4         | 1.2              | 0.6               | 2289          | 29.6                 | 65            |
|              | High a.d.     | 1.5         | 0.4              | 0.1               | 2294          | 12.2                 | 36            |
|              | Moderate a.d. | 1.7         | 0.7              | 0.4               | 2276          | 35.9                 | 43            |
|              | Low a.d.      | 1.3         | 0.5              | 0.2               | 2288          | 41.0                 | 38            |
|              | Lowest a.d.   | 1.2         | 0.3              | 0.1               | 2304          | 17.8                 | 31            |
|              | Total         | 1.8         | 0.7              | 0.3               | 21957         | 25.4                 | 620           |
| Mushrooms    | Amsterdam     | 6.6         | 2.4              | 0.6               | 3709          | 7.1                  | 227           |
|              | Rotterdam     | 2.5         | 0.7              | 0.1               | 2320          |                      | 57            |
|              | Den Haag      | 2.5         | 0.8              | 0.2               | 2276          | 7.1                  | 62            |
|              | Highest a.d.  | 3.0         | 1.0              | 0.3               | 2289          | 4.1                  | 88            |
|              | High a.d.     | 1.6         | 0.7              | 0.1               | 2295          |                      | 44            |
|              | Moderate a.d. | 1.2         | 0.4              | 0.0               | 2276          |                      | 35            |
|              | Low a.d.      | 0.9         | 0.3              | 0.0               | 2288          | 11.6                 | 33            |
|              | Lowest a.d.   | 0.9         | 0.5              | 0.1               | 2304          | 14.7                 | 30            |
|              | Total         | 1.6         | 0.6              | 0.1               | 19757         | 4.8                  | 576           |

WHO ARE DRUG USERS IN THE NETHERLANDS?

**Table 5.** Age first use by stratum / address density (a.d.)

|               | <i>Mean</i> | <i>Median</i> | <i>unw. N</i> |
|---------------|-------------|---------------|---------------|
| Amsterdam     | 19.8        | 18.0          | 1258          |
| Rotterdam     | 19.6        | 18.0          | 389           |
| Den Haag      | 20.2        | 18.0          | 440           |
| Utrecht       | 19.7        | 18.0          | 600           |
| Highest a.d.  | 20.3        | 18.0          | 545           |
| High a.d.     | 18.9        | 18.0          | 402           |
| Moderate a.d. | 18.4        | 17.0          | 299           |
| Low a.d.      | 19.5        | 17.0          | 322           |
| Lowest a.d.   | 19.0        | 17.0          | 291           |
| Total         | 19.2        | 18.0          | 4546          |

**Table 6.** Age last use by stratum / address density (a.d.)

|               | <i>Mean</i> | <i>Median</i> | <i>unw. N</i> |
|---------------|-------------|---------------|---------------|
| Amsterdam     | 25.5        | 24.0          | 793           |
| Rotterdam     | 23.9        | 22.0          | 249           |
| Den Haag      | 24.7        | 23.0          | 273           |
| Utrecht       | 23.7        | 22.0          | 414           |
| Highest a.d.  | 24.6        | 22.0          | 330           |
| High a.d.     | 22.3        | 21.0          | 274           |
| Moderate a.d. | 21.9        | 20.0          | 185           |
| Low a.d.      | 21.6        | 20.0          | 198           |
| Lowest a.d.   | 22.6        | 20.0          | 177           |
| Total         | 22.8        | 21.0          | 2893          |

**Table 7.** Length current use by stratum / address density (a.d.)

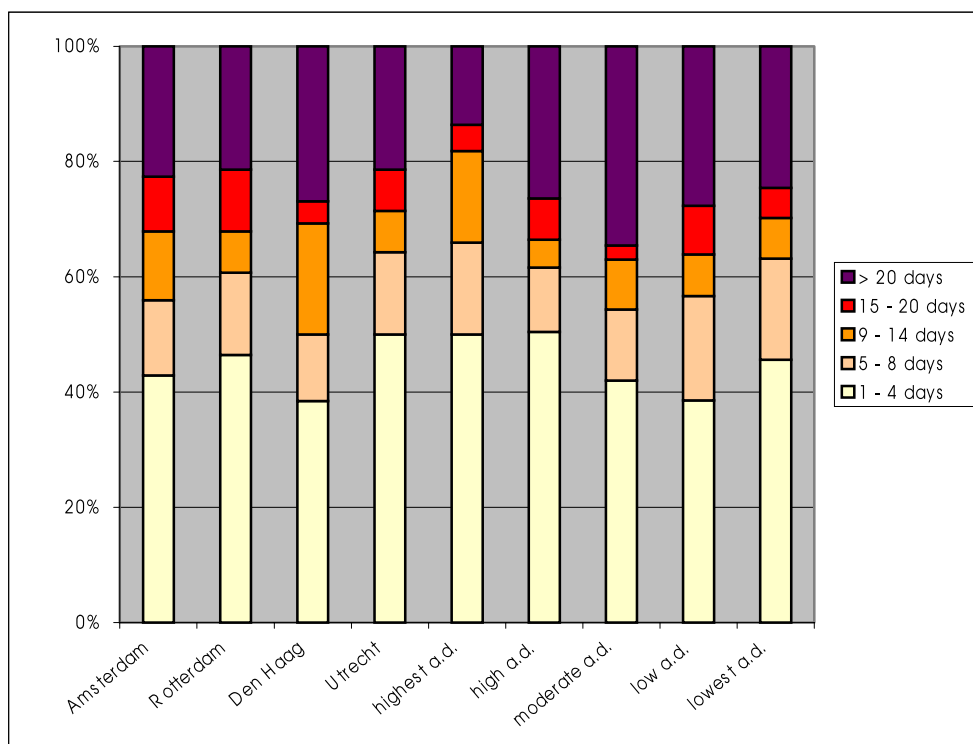
|               | <i>Mean</i> | <i>Median</i> | <i>unw. N</i> |
|---------------|-------------|---------------|---------------|
| Amsterdam     | 12.6        | 11.0          | 457           |
| Rotterdam     | 9.1         | 7.6           | 141           |
| Den Haag      | 11.4        | 9.0           | 166           |
| Utrecht       | 9.0         | 7.0           | 180           |
| Highest a.d.  | 7.8         | 6.0           | 214           |
| High a.d.     | 9.2         | 6.0           | 127           |
| Moderate a.d. | 7.5         | 5.0           | 114           |
| Low a.d.      | 7.2         | 5.0           | 122           |
| Lowest a.d.   | 6.9         | 3.0           | 114           |
| Total         | 8.7         | 6.0           | 1635          |

**Table 8.** Length past use by stratum / address density (a.d.)

|               | <i>Mean</i> | <i>Median</i> | <i>unw. N</i> |
|---------------|-------------|---------------|---------------|
| Amsterdam     | 4.9         | 3.0           | 792           |
| Rotterdam     | 4.2         | 1.4           | 248           |
| Den Haag      | 4.0         | 2.0           | 272           |
| Utrecht       | 3.5         | 2.0           | 414           |
| Highest a.d.  | 3.3         | 1.0           | 329           |
| High a.d.     | 3.2         | 1.0           | 274           |
| Moderate a.d. | 2.9         | 1.0           | 185           |
| Low a.d.      | 2.2         | 1.0           | 198           |
| Lowest a.d.   | 2.9         | 1.0           | 176           |
| Total         | 3.2         | 1.0           | 2888          |

**Table 9.** Number of days used in last month (%) by stratum / address density

|               | <i>1 - 4 days</i> | <i>5 - 8 days</i> | <i>9 - 14 days</i> | <i>15 - 20 days</i> | <i>&gt; 20 days</i> | <i>Unw. N</i> |
|---------------|-------------------|-------------------|--------------------|---------------------|---------------------|---------------|
| Amsterdam     | 42.9              | 13.1              | 11.9               | 9.5                 | 22.6                | 281           |
| Rotterdam     | 46.4              | 14.3              | 7.1                | 10.7                | 21.4                | 75            |
| Den Haag      | 38.5              | 11.5              | 19.2               | 3.8                 | 26.9                | 100           |
| Utrecht       | 50.0              | 14.3              | 7.1                | 7.1                 | 21.4                | 94            |
| Highest a.d.  | 50.0              | 15.9              | 15.9               | 4.5                 | 13.6                | 120           |
| High a.d.     | 50.4              | 11.2              | 4.8                | 7.2                 | 26.4                | 69            |
| Moderate a.d. | 42.0              | 12.3              | 8.6                | 2.5                 | 34.6                | 53            |
| Low a.d.      | 38.6              | 18.1              | 7.2                | 8.4                 | 27.7                | 61            |
| Lowest a.d.   | 45.6              | 17.5              | 7.0                | 5.3                 | 24.6                | 48            |
| Total         | 44.8              | 14.0              | 8.9                | 6.6                 | 25.6                | 901           |



**Figure 3:** Frequency of last month cannabis use by stratum / address density (a.d.)

**Table 10:** Multiple drug use

|           |               | <i>Lifetime prevalence</i> |                |                  |                |                |                |               | <i>Unw. N</i> | <i>Lifetime prevalence</i> | <i>Unw. N</i> |
|-----------|---------------|----------------------------|----------------|------------------|----------------|----------------|----------------|---------------|---------------|----------------------------|---------------|
|           |               | <i>Alcohol</i>             | <i>Tobacco</i> | <i>Canna-bis</i> | <i>Cocaine</i> | <i>Ecstasy</i> | <i>Amphet.</i> | <i>Heroin</i> |               | <i>Mush-rooms</i>          |               |
| Cannabis  | Never         | 88.6                       | 63.2           | -                | 0.1            | 0.1            | 0.2            | 0.0           | 17380         | 0.1                        | 15783         |
|           | Past use <25  | 98.9                       | 91.9           | -                | 4.1            | 3.9            | 3.5            | 0.5           | 2239          | 2.0                        | 1908          |
|           | Past use >25  | 98.7                       | 94.8           | -                | 23.3           | 12.6           | 21.6           | 5.2           | 667           | 11.3                       | 579           |
|           | Last year <25 | 98.9                       | 93.4           | -                | 4.4            | 9.0            | 3.7            | 0.0           | 631           | 4.8                        | 561           |
|           | Last year >25 | 98.3                       | 95.3           | -                | 34.8           | 33.5           | 28.2           | 4.2           | 986           | 35.5                       | 875           |
| Cocaine   | Never         | 90                         | 67.3           | 14.0             | -              | 0.8            | 0.8            | 0.0           | 21236         | 0.8                        | 19111         |
|           | Past use <25  | 100                        | 95.3           | 93.1             | -              | 38.4           | 42.8           | 6.5           | 417           | 32.4                       | 369           |
|           | Past use >25  | 98.1                       | 100            | 96.2             | -              | 55.7           | 68.6           | 34.6          | 85            | 51.0                       | 77            |
|           | Last year <25 | 97.4                       | 92.3           | 90.9             | -              | 76.9           | 57.7           | 7.7           | 132           | 62.7                       | 118           |
|           | Last year >25 | 100                        | 98.1           | 100              | -              | 84.3           | 63.4           | 17.3          | 84            | 62.8                       | 78            |
| Ecstasy   | Never         | 90                         | 67.4           | 14.1             | 1.0            | -              | 1.0            | 0.1           | 21332         | 0.8                        | 19200         |
|           | Past use <25  | 100                        | 94.3           | 93.7             | 46.5           | -              | 33.4           | 5.3           | 299           | 34.5                       | 269           |
|           | Past use >25  | 100                        | 88.9           | 90.9             | 84.1           | -              | 79.6           | 9.3           | 52            | 52.3                       | 47            |
|           | Last year <25 | 100                        | 97.7           | 90.6             | 54.0           | -              | 49.4           | 8.2           | 173           | 50.0                       | 147           |
|           | Last year >25 | 96.5                       | 91.4           | 93.0             | 89.7           | -              | 74.1           | 5.1           | 94            | 87.5                       | 85            |
| Amphetam. | Never         | 90                         | 67.3           | 14.3             | 1.1            | 1.0            | -              | 0.0           | 21373         | 1.0                        | 19229         |
|           | Past use <25  | 100                        | 97.9           | 89.1             | 46.2           | 37.2           | -              | 8.8           | 330           | 31.9                       | 293           |
|           | Past use >25  | 100                        | 92.9           | 93.8             | 75.5           | 51.0           | -              | 20.6          | 121           | 46.4                       | 114           |
|           | Last year <25 | 100                        | 94.3           | 85.7             | 51.4           | 77.2           | -              | 0.0           | 69            | 51.5                       | 60            |
|           | Last year >25 | 100                        | 94.4           | 86.1             | 77.7           | 81.0           | -              | 11.1          | 59            | 58.4                       | 55            |
| Mushrooms | Never         | 90                         | 67.4           | 14.2             | 1.3            | 1.0            | 1.1            | 0.1           | 19184         | -                          |               |
|           | Past use <25  | 99.5                       | 96.7           | 91.9             | 53.2           | 48.1           | 45.0           | 7.1           | 328           | -                          |               |
|           | Past use >25  | 100                        | 100            | 100.0            | 100.0          | 75.0           | 88.9           | 50.0          | 11            | -                          |               |
|           | Last year <25 | 97.6                       | 89.7           | 92.9             | 52.3           | 57.6           | 39.6           | 4.7           | 220           | -                          |               |
|           | Last year >25 | 100                        | 77.8           | 75.0             | 77.7           | 40.0           | 75.0           | 55.5          | 13            | -                          |               |

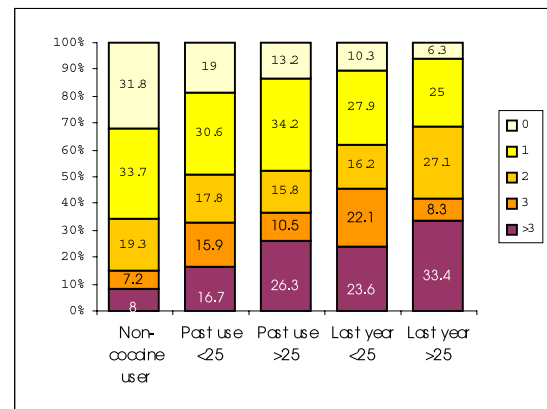
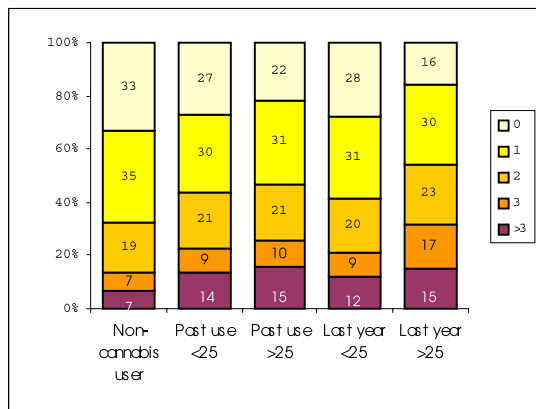


# WHO ARE DRUG USERS IN THE NETHERLANDS?

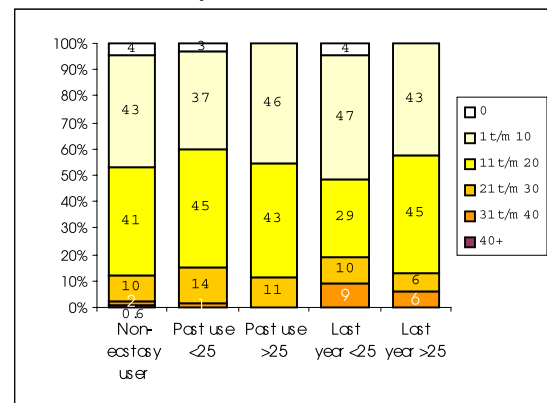
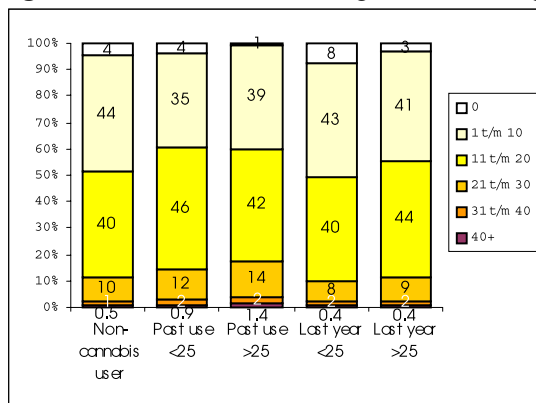
**Table 11:** Number of glasses of alcohol drunk per day by drug use category

|              |               | 0    | 1    | 2    | 3    | >3   | Unw. N |
|--------------|---------------|------|------|------|------|------|--------|
| Cannabis     | Never used    | 33.1 | 34.5 | 18.8 | 6.6  | 6.9  | 11038  |
|              | Past use <25  | 26.8 | 29.5 | 21   | 9    | 13.5 | 1957   |
|              | Past use >25  | 22   | 31.4 | 20.8 | 10.3 | 15.4 | 573    |
|              | Last year <25 | 28   | 30.8 | 20.2 | 9.2  | 11.8 | 567    |
|              | Last year >25 | 15.7 | 29.9 | 22.5 | 17.2 | 14.7 | 892    |
| Cocaine      | Never used    | 31.8 | 33.7 | 19.3 | 7.2  | 8    | 14420  |
|              | Past use <25  | 19   | 30.6 | 17.8 | 15.9 | 16.7 | 384    |
|              | Past use >25  | 13.2 | 34.2 | 15.8 | 10.5 | 26.3 | 65     |
|              | Last year <25 | 10.3 | 27.9 | 16.2 | 22.1 | 23.6 | 120    |
|              | Last year >25 | 6.3  | 25   | 27.1 | 8.3  | 33.4 | 78     |
| Ecstasy      | Never used    | 31.7 | 33.6 | 19.3 | 7.3  | 8.2  | 14501  |
|              | Past use <25  | 16.8 | 34.7 | 24.7 | 12.1 | 11.6 | 268    |
|              | Past use >25  | 20   | 27.5 | 22.5 | 10   | 20   | 46     |
|              | Last year <25 | 20.5 | 30.1 | 13.3 | 10.8 | 25.2 | 162    |
|              | Last year >25 | 13.5 | 28.8 | 21.2 | 21.2 | 15.4 | 84     |
| Amphetamines | Never used    | 31.7 | 33.6 | 19.2 | 7.3  | 8.1  | 14560  |
|              | Past use <25  | 17.2 | 30.4 | 24   | 10.3 | 18.2 | 286    |
|              | Past use >25  | 16   | 27.2 | 22.2 | 14.8 | 19.7 | 102    |
|              | Last year <25 | 20.6 | 38.2 | 11.8 | 14.7 | 14.7 | 62     |
|              | Last year >25 | 6.3  | 31.3 | 21.9 | 12.5 | 28.1 | 53     |
| Mushrooms    | Never used    | 31.8 | 33.6 | 19.3 | 7.2  | 8.2  | 12942  |
|              | Past use <25  | 15.2 | 31.8 | 18.7 | 14.6 | 19.6 | 300    |
|              | Past use >25  | 16.7 |      | 50.0 |      | 33.3 | 7      |
|              | Last year <25 | 12.6 | 36   | 21.6 | 17.1 | 12.6 | 196    |
|              | Last year >25 | 16.7 |      | 16.7 | 50.0 | 16.7 | 11     |

**Figures 4a and 4b:** Number of glasses of alcohol drunk per day by cannabis and cocaine users



**Figures 5a and 5b:** Number of cigarettes smoked per day by cannabis and ecstasy users



**Table 12:** Number of cigarettes smoked per day by drug use category

|             |               | 0    | 1 - 10 | 11 - 20 | 21 - 30 | 31 - 40 | 40+ | Unw. N |
|-------------|---------------|------|--------|---------|---------|---------|-----|--------|
| Cannabis    | Never used    | 4.3  | 44.4   | 39.6    | 9.7     | 1.4     | 0.5 | 4111   |
|             | Past use <25  | 3.8  | 35.3   | 46.3    | 11.6    | 2.0     | 0.9 | 1083   |
|             | Past use >25  | 1.0  | 38.9   | 42.4    | 13.9    | 2.4     | 1.4 | 337    |
|             | Last year <25 | 7.9  | 42.6   | 39.6    | 7.9     | 1.5     | 0.4 | 383    |
|             | Last year >25 | 3.4  | 41.3   | 43.7    | 9.3     | 2.0     | 0.4 | 751    |
| Cocaine     | Never used    | 4.3  | 42.8   | 40.9    | 10.0    | 1.5     | 0.6 | 6199   |
|             | Past use <25  | 1.0  | 41.7   | 44.8    | 10.4    | 1.6     | 0.5 | 269    |
|             | Past use >25  | 5.0  | 25.0   | 40.0    | 25.0    | 5.0     |     | 58     |
|             | Last year <25 | 1.7  | 43.3   | 43.3    | 10.0    |         | 1.7 | 103    |
|             | Last year >25 | 25.0 | 45.8   | 16.7    | 10.4    | 2.1     |     | 71     |
| Ecstasy     | Never used    | 4.3  | 42.6   | 41.0    | 10.1    | 1.5     | 0.6 | 6256   |
|             | Past use <25  | 3.2  | 36.9   | 44.6    | 14.0    | 1.3     |     | 205    |
|             | Past use >25  |      | 45.7   | 42.9    | 11.4    |         |     | 38     |
|             | Last year <25 | 4.4  | 47.1   | 29.4    | 10.3    | 8.8     |     | 128    |
|             | Last year >25 |      | 42.6   | 44.7    | 6.4     | 6.4     |     | 70     |
| Amphetamine | Never used    | 4.3  | 42.8   | 40.6    | 10.2    | 1.5     | 0.6 | 6306   |
|             | Past use <25  | 1.2  | 35.3   | 52.4    | 7.6     | 3.5     |     | 216    |
|             | Past use >25  | 1.3  | 40.0   | 45.3    | 6.7     | 5.3     | 1.3 | 82     |
|             | Last year <25 | 4.2  | 33.3   | 50.0    | 8.3     |         | 4.2 | 47     |
|             | Last year >25 | 3.4  | 37.9   | 44.8    | 13.8    |         |     | 47     |
| Mushrooms   | Never used    | 4.2  | 42.5   | 41.0    | 10.1    | 1.5     | 0.6 | 6256   |
|             | Past use <25  | 3.6  | 39.8   | 44.0    | 10.2    | 1.8     | 0.6 | 252    |
|             | Past use >25  | 12.5 |        | 50.0    | 12.5    | 25.0    |     | 10     |
|             | Last year <25 | 2.2  | 50.0   | 38.0    | 8.7     |         | 1.1 | 173    |
|             | Last year >25 |      | 71.4   | 14.3    | 14.3    |         |     | 12     |

**Table 13:** Percentage of users male

|           |     | <i>Cannabis</i> |        | <i>Cocaine</i> |        | <i>Ecstasy</i> |        | <i>Amphetam.</i> |        | <i>Mushrooms</i> |        |
|-----------|-----|-----------------|--------|----------------|--------|----------------|--------|------------------|--------|------------------|--------|
|           |     | % Male          | Unw. N | % Male         | Unw. N | % Male         | Unw. N | % Male           | Unw. N | % Male           | Unw. N |
| Past use  | <25 | 62.5            | 2239   | 62.2           | 417    | 66.2           | 299    | 68.9             | 330    | 75.5             | 328    |
|           | >25 | 70.5            | 667    | 81.1           | 85     | 90.9           | 52     | 73.5             | 121    | 100.0            | 11     |
| Last year | <25 | 55.6            | 631    | 74.0           | 132    | 69.8           | 173    | 71.4             | 69     | 76.0             | 220    |
|           | >25 | 72.7            | 988    | 80.8           | 84     | 77.6           | 94     | 73.0             | 59     | 88.9             | 13     |

**Table 14:** Differences between men and women in age of first and last use and in length of use

|                    |   | <i>Cannabis</i> |          | <i>Cocaine</i> |         | <i>Ecstasy</i> |         | <i>Amphetamines</i> |        | <i>Mushrooms</i> |        |
|--------------------|---|-----------------|----------|----------------|---------|----------------|---------|---------------------|--------|------------------|--------|
|                    |   | Mean            | unw. N   | Mean           | unw. N  | Mean           | unw. N  | Mean                | unw. N | Mean             | unw. N |
| Age first use      | M | 19              | 2700     | 22.5           | 453     | 22.9           | 404     | 20.6                | 373    | 23.1             | 378    |
|                    | V | 19.7            | 1846 **  | 23.9           | 259 *   | 23.1           | 218     | 21.6                | 203    | 22.2             | 186    |
| Age last use       | M | 22.9            | 1630     | 26             | 300     | 25             | 227     | 23.5                | 283    | 24.6             | 221    |
|                    | V | 22.6            | 1263     | 26.4           | 196     | 24.5           | 126     | 22.9                | 165    | 23.4             | 113    |
| Length present use | M | 9.3             | 1057     | 5.5            | 153     | 3.3            | 177     | 6.4                 | 89     | 2.5              | 156    |
|                    | V | 7.6             | 578 **   | 7.3            | 62      | 3.2            | 92      | 6.6                 | 38     | 1.8              | 73     |
| Length past use    | M | 3.5             | 1626     | 3.3            | 297     | 1.5            | 227     | 2.7                 | 282    | 1.3              | 220    |
|                    | V | 2.8             | 1262 *** | 1.9            | 196 *** | 0.7            | 126 *** | 1.9                 | 165    | 0.8              | 113    |

Two-tailed t-tests: \*p&lt;.05; \*\*p&lt;.01; \*\*\*p&lt;.001

WHO ARE DRUG USERS IN THE NETHERLANDS?

**Table 15:** Differences between men and women in frequency of drug use in last month

|              |   | <i>1 - 4 days</i> | <i>5 - 8 days</i> | <i>9 - 14 days</i> | <i>15 - 20 days</i> | <i>&gt; 20 days</i> | <i>Unw. N</i> |
|--------------|---|-------------------|-------------------|--------------------|---------------------|---------------------|---------------|
| Cannabis     | M | 41.5              | 14.8              | 9.5                | 7.1                 | 27.0                | 613           |
|              | V | 53.1              | 11.7              | 7.4                | 4.9                 | 22.8                | 288           |
| Cocaine      | M | 89.5              | 2.6               | 2.6                | 2.6                 | 2.6                 | 63            |
|              | V | 100.0             | -                 | -                  | -                   | -                   | 17            |
| Amphetamines | M | 71.4              | 14.3              | -                  | 4.8                 | 9.5                 | 40            |
|              | V | 33.3              | 33.3              | 11.1               | -                   | 22.2                | 12            |
| Ecstasy      | M | 97.5              | 2.5               | -                  | -                   | -                   | 56            |
|              | V | 100.0             | -                 | -                  | -                   | -                   | 39            |
| Mushrooms    | M | 100.0             | -                 | -                  | -                   | -                   | 30            |
|              | V | 100.0             | -                 | -                  | -                   | -                   | 17            |

**Table 16:** Percentage of respondents having partner by drug use

|            |     | <i>Cannabis</i> |               | <i>Cocaine</i> |               | <i>Ecstasy</i> |               | <i>Amphetamines</i> |               | <i>Mushrooms</i> |               |
|------------|-----|-----------------|---------------|----------------|---------------|----------------|---------------|---------------------|---------------|------------------|---------------|
|            |     | %               | <i>Unw. N</i> | %              | <i>Unw. N</i> | %              | <i>Unw. N</i> | %                   | <i>Unw. N</i> | %                | <i>Unw. N</i> |
| Never used |     | 64.8            | 17295         | 63.4           | 21140         | 63.6           | 21236         | 63.3                | 21277         | 63.7             | 19185         |
| Past use   | <25 | 60.8            | 2237          | 49.3           | 417           | 38.1           | 299           | 56.1                | 330           | 38.7             | 328           |
|            | >25 | 66.1            | 667           | 53.8           | 85            | 22.7           | 52            | 36.7                | 121           | 12.5             | 11            |
| Last year  | <25 | 29.4            | 624           | 28.6           | 132           | 27.9           | 172           | 17.1                | 68            | 17.6             | 220           |
|            | >25 | 34.6            | 985           | 30.8           | 84            | 20.7           | 94            | 27.0                | 59            | 37.5             | 13            |

**Table 17:** Marital status by drug use (%)

|              |                | <i>Unmarried</i> | <i>Married</i> | <i>Divorced.</i> | <i>Widowed</i> | <i>Unw. N</i> |
|--------------|----------------|------------------|----------------|------------------|----------------|---------------|
| Cannabis     | never used     | 30.1             | 57.1           | 5.1              | 7.7            | 17380         |
|              | past use < 25  | 55.7             | 37.3           | 6.6              | 0.3            | 2239          |
|              | past use > 25  | 51.3             | 38.3           | 10.2             | 0.2            | 667           |
|              | last year < 25 | 80.8             | 15.5           | 2.9              | 0.8            | 631           |
|              | last year > 25 | 81.5             | 11.4           | 7.0              | 0.2            | 988           |
| Cocaine      | never used     | 34.5             | 53.6           | 5.2              | 6.7            | 21237         |
|              | past use < 25  | 59.6             | 24.2           | 15.9             | 0.4            | 417           |
|              | past use > 25  | 67.3             | 25.0           | 7.7              | 0.0            | 85            |
|              | last year < 25 | 88.5             | 7.7            | 3.8              | 0.0            | 132           |
|              | last year > 25 | 80.8             | 13.5           | 5.8              | 0.0            | 84            |
| Ecstasy      | never used     | 34.2             | 53.8           | 5.3              | 6.7            | 21332         |
|              | past use < 25  | 77.6             | 12.9           | 9.5              | 0.0            | 299           |
|              | past use > 25  | 90.9             | 9.1            | 0.0              | 0.0            | 52            |
|              | last year < 25 | 95.3             | 3.5            | 1.2              | 0.0            | 173           |
|              | last year > 25 | 96.6             | 1.7            | 1.7              | 0.0            | 94            |
| Amphetamines | never used     | 34.6             | 53.5           | 5.3              | 6.7            | 21373         |
|              | past use < 25  | 60.9             | 28.2           | 9.2              | 1.7            | 330           |
|              | past use > 25  | 67.3             | 21.4           | 10.2             | 1.0            | 121           |
|              | last year < 25 | 97.1             | 2.9            | 0.0              | 0.0            | 69            |
|              | last year > 25 | 75.7             | 21.6           | 2.7              | 0.0            | 59            |
| Mushrooms    | never used     | 34.1             | 53.9           | 5.4              | 6.7            | 19185         |
|              | past use < 25  | 80.3             | 16.9           | 2.8              | 0.0            | 328           |
|              | past use > 25  | 87.5             | 0.0            | 12.5             | 0.0            | 11            |
|              | last year < 25 | 92.9             | 3.2            | 4.0              | 0.0            | 20            |
|              | last year > 25 | 62.5             | 0.0            | 37.5             | 0.0            | 13            |
| Total        |                | 35.1             | 53.0           | 5.3              | 6.6            | 21955         |

**Table 18:** Marital status by drug use by age (%)

|       |                | <i>Partner</i> | <i>Marital status</i> |                  |                   |               |
|-------|----------------|----------------|-----------------------|------------------|-------------------|---------------|
|       |                | <i>% Yes</i>   | <i>% Not married</i>  | <i>% Married</i> | <i>% Divorced</i> | <i>Unw. N</i> |
| 20-24 | Never used     | 24.5           | 94.2                  | 5.7              | 0.1               | 937           |
|       | Past use < 25  | 17.3           | 99.6                  | 0.4              | 0.0               | 254           |
|       | Past use > 25  | 44.4           | 100.0                 | 0.0              | 0.0               | 50            |
|       | Last year < 25 | 20.8           | 97.2                  | 2.8              | 0.0               | 83            |
|       | Last year > 25 | 19.6           | 97.3                  | 2.7              | 0.0               | 166           |
| 25-29 | Never used     | 70.5           | 59.7                  | 39.2             | 1.1               | 1284          |
|       | Past use < 25  | 64.9           | 77.4                  | 21.8             | 0.8               | 380           |
|       | Past use > 25  | 63.1           | 71.1                  | 28.9             | 0.0               | 95            |
|       | Last year < 25 | 49.1           | 81.1                  | 18.9             | 0.0               | 77            |
|       | Last year > 25 | 44.4           | 87.2                  | 10.4             | 2.4               | 178           |
| 30-34 | Never used     | 83.7           | 30.2                  | 66.0             | 3.7               | 1320          |
|       | Past use < 25  | 79.2           | 59.1                  | 38.4             | 2.5               | 359           |
|       | Past use > 25  | 76.7           | 54.9                  | 42.9             | 2.2               | 114           |
|       | Last year < 25 | 76.3           | 55.3                  | 42.1             | 2.6               | 43            |
|       | Last year > 25 | 52.5           | 81.4                  | 13.6             | 5.1               | 107           |
| 35-39 | Never used     | 86.2           | 18.8                  | 77.0             | 3.5               | 1348          |
|       | Past use < 25  | 79.8           | 36.9                  | 58.5             | 4.6               | 292           |
|       | Past use > 25  | 77.8           | 45.0                  | 48.8             | 6.3               | 119           |
|       | Last year < 25 | 68.2           | 50.0                  | 50.0             | 0.0               | 25            |
|       | Last year > 25 | 60.5           | 65.3                  | 24.0             | 10.7              | 102           |
| 40-49 | Never used     | 85.8           | 9.8                   | 80.4             | 9.1               | 2569          |
|       | Past use < 25  | 79.9           | 16.9                  | 68.8             | 13.7              | 415           |
|       | Past use > 25  | 69.7           | 29.7                  | 47.4             | 22.9              | 201           |
|       | Last year < 25 | 46.7           | 32.3                  | 32.3             | 25.8              | 40            |
|       | Last year > 25 | 55.6           | 39.7                  | 28.6             | 31.7              | 106           |

**Table 19:** Main occupation of time by drug use category

|           |                | <i>Most time spent on...</i> |                      |                  |                       |              |               |
|-----------|----------------|------------------------------|----------------------|------------------|-----------------------|--------------|---------------|
|           |                | <i>Paid labour</i>           | <i>House-keeping</i> | <i>Education</i> | <i>Voluntary work</i> | <i>Other</i> | <i>unw. N</i> |
| Cannabis  | Never used     | 40.6                         | 32.8                 | 12.9             | 5.6                   | 8.2          | 15499         |
|           | Past use < 25  | 65.8                         | 11.9                 | 15.7             | 2.0                   | 4.6          | 1898          |
|           | Past use > 25  | 72.0                         | 8.7                  | 10.3             | 1.4                   | 7.7          | 575           |
|           | Last year < 25 | 42.0                         | 6.7                  | 44.2             | 2.2                   | 4.9          | 553           |
|           | Last year > 25 | 57.3                         | 9.7                  | 23.2             | 1.9                   | 8.0          | 862           |
| Cocaine   | Never used     | 43.6                         | 29.6                 | 14.0             | 5.0                   | 7.8          | 18802         |
|           | Past use < 25  | 70.2                         | 14.1                 | 8.0              | 0.8                   | 6.9          | 365           |
|           | Past use > 25  | 52.1                         | 22.9                 | 6.3              | 6.3                   | 12.5         | 76            |
|           | Last year < 25 | 70.4                         | 7.0                  | 19.7             | 1.4                   | 1.4          | 115           |
|           | Last year > 25 | 66.7                         | 12.5                 | 8.3              | 2.1                   | 10.4         | 76            |
| Ecstasy   | Never used     | 43.7                         | 29.7                 | 13.8             | 5.0                   | 7.8          | 18890         |
|           | Past use < 25  | 65.3                         | 10.9                 | 15.8             | 2.0                   | 5.9          | 266           |
|           | Past use > 25  | 75.0                         | 2.3                  | 18.2             | 2.3                   | 2.3          | 46            |
|           | Last year < 25 | 53.8                         | 10.0                 | 30.0             | 0.0                   | 6.3          | 146           |
|           | Last year > 25 | 77.8                         | 1.9                  | 16.7             | 0.0                   | 3.7          | 83            |
| Amphetam. | Never used     | 43.7                         | 29.6                 | 13.9             | 5.0                   | 7.7          | 18918         |
|           | Past use < 25  | 64.1                         | 13.9                 | 8.7              | 3.9                   | 9.5          | 291           |
|           | Past use > 25  | 68.1                         | 9.9                  | 9.9              | 2.2                   | 9.9          | 111           |
|           | Last year < 25 | 55.6                         | 2.8                  | 36.1             | 0.0                   | 5.6          | 59            |
|           | Last year > 25 | 54.3                         | 8.6                  | 25.7             | 0.0                   | 11.4         | 53            |
| Mushrooms | Never used     | 43.8                         | 29.6                 | 13.8             | 5.0                   | 7.8          | 18868         |
|           | Past use < 25  | 61.9                         | 12.4                 | 16.7             | 1.9                   | 7.1          | 324           |
|           | Past use > 25  | 0.0                          | 0.0                  | 42.9             | 28.6                  | 28.6         | 11            |
|           | Last year < 25 | 55.6                         | 9.7                  | 28.2             | 0.8                   | 5.6          | 216           |
|           | Last year > 25 | 66.7                         | 11.1                 | 11.1             | 0.0                   | 11.1         | 13            |

# WHO ARE DRUG USERS IN THE NETHERLANDS?

**Table 20:** Main occupation of time by drug use category by age group

|       |                 | <i>Most time spent on...</i> |                      |                  |                  |              | <i>Unw. N</i> |
|-------|-----------------|------------------------------|----------------------|------------------|------------------|--------------|---------------|
|       | <i>Cannabis</i> | <i>Payed labour</i>          | <i>House-keeping</i> | <i>Education</i> | <i>Voluntary</i> | <i>Other</i> |               |
| 16-19 | never used      | 16.9                         | 1.5                  | 77.4             | 0.5              | 3.8          | 1970          |
|       | past use < 25   | 17.6                         |                      | 79.6             | 0.9              | 1.9          | 238           |
|       | past use > 25   | 20.0                         |                      | 70.0             |                  | 10.0         | 55            |
|       | last year < 25  | 13.7                         |                      | 84.3             |                  | 2.0          | 231           |
|       | last year > 25  | 26.0                         | 1.0                  | 66.0             | 1.0              | 6.0          | 252           |
| 20-24 | never used      | 53.6                         | 7.0                  | 34.3             | 1.1              | 4.0          | 751           |
|       | past use < 25   | 46.3                         | 4.9                  | 44.4             | 0.7              | 3.7          | 197           |
|       | past use > 25   | 53.3                         | 6.7                  | 31.1             | 2.2              | 6.7          | 40            |
|       | last year < 25  | 54.3                         |                      | 41.4             |                  | 4.3          | 59            |
|       | last year > 25  | 59.6                         | 3.4                  | 28.8             |                  | 8.2          | 135           |
| 25-29 | never used      | 73.4                         | 18.9                 | 4.0              | 1.2              | 2.4          | 1057          |
|       | past use < 25   | 85.0                         | 6.6                  | 6.3              | 1.6              | 0.5          | 301           |
|       | past use > 25   | 77.8                         | 11.1                 | 4.9              | 1.2              | 4.9          | 77            |
|       | last year < 25  | 52.9                         | 19.6                 | 13.7             | 5.9              | 7.8          | 58            |
|       | last year > 25  | 78.4                         | 6.9                  | 7.8              | 2.6              | 4.3          | 147           |
| 30-59 | never used      | 58.0                         | 32.1                 | 1.4              | 4.2              | 4.3          | 6578          |
|       | past use < 25   | 72.5                         | 17.2                 | 2.5              | 1.7              | 6.2          | 1051          |
|       | past use > 25   | 76.3                         | 8.7                  | 5.1              | 1.7              | 8.2          | 399           |
|       | last year < 25  | 80.0                         | 15.8                 |                  | 3.2              | 1.1          | 111           |
|       | last year > 25  | 62.1                         | 21.2                 | 3.0              | 3.4              | 10.3         | 295           |

**Table 21:** Percentage of respondents enrolled in day-time education by drug use category

|                | <i>Cannabis</i> |               | <i>Cocaine</i> |               | <i>Ecstasy</i> |               | <i>Amphetam.</i> |               | <i>Mushrooms</i> |               |
|----------------|-----------------|---------------|----------------|---------------|----------------|---------------|------------------|---------------|------------------|---------------|
|                | %               | <i>Unw. N</i> | %              | <i>Unw. N</i> | %              | <i>Unw. N</i> | %                | <i>Unw. N</i> | %                | <i>Unw. N</i> |
| Never used     | 21.8            | 17284         | 23.7           | 21126         | 23.5           | 21221         | 23.6             | 21262         | 23.6             | 19169         |
| Past use < 25  | 31.0            | 2237          | 22.8           | 417           | 37.4           | 299           | 31.6             | 330           | 35.4             | 328           |
| Past use > 25  | 22.9            | 666           | 11.5           | 85            | 31.8           | 52            | 24.5             | 121           | 50.0             | 11            |
| Last year < 25 | 56.1            | 622           | 42.9           | 132           | 37.6           | 171           | 50.0             | 68            | 56.0             | 220           |
| Last year > 25 | 42.6            | 983           | 35.3           | 83            | 34.5           | 94            | 35.1             | 59            | 37.5             | 12            |

**Table 22:** Percentage of respondents enrolled in day-time education by drug use category by age-group

|        |                | <i>Cannabis</i> |               | <i>Cocaine</i> |               | <i>Ecstasy</i> |               | <i>Amphetam.</i> |               | <i>Mushrooms</i> |               |
|--------|----------------|-----------------|---------------|----------------|---------------|----------------|---------------|------------------|---------------|------------------|---------------|
|        |                | %               | <i>Unw. N</i> | %              | <i>Unw. N</i> | %              | <i>Unw. N</i> | %                | <i>Unw. N</i> | %                | <i>Unw. N</i> |
| 12-15. | Never used     | 90.9            | 2018          | 90.9           | 2210          | 91.0           | 2206          | 90.9             | 2206          | 90.9             | 2198          |
|        | Past use < 25  | 96.2            | 62            | 0.0            | 1             | 50.0           | 3             |                  | 3             | 100.0            | 4             |
|        | Past use > 25  | 100.0           | 1             |                |               |                |               |                  |               |                  |               |
|        | Last year < 25 | 91.3            | 94            | 100.0          | 3             | 100.0          | 3             | 100.0            | 3             | 80.0             | 12            |
|        | Last year > 25 | 81.8            | 32            |                |               | 100.0          | 2             | 100.0            | 2             |                  |               |
| 16-19  | Never used     | 86.0            | 2061          | 86.0           | 2814          | 86.2           | 2740          | 86.1             | 2786          | 85.9             | 2604          |
|        | Past use < 25  | 88.2            | 251           | 70.0           | 30            | 84.2           | 50            | 71.4             | 40            | 81.3             | 77            |
|        | Past use > 25  | 90.0            | 58            | 0.0            | 3             | 57.1           | 19            | 33.3             | 14            |                  |               |
|        | Last year < 25 | 88.2            | 242           | 86.7           | 38            | 84.2           | 53            | 92.3             | 32            | 81.6             | 100           |
|        | Last year > 25 | 77.7            | 267           | 33.3           | 10            | 63.6           | 31            | 77.8             | 22            |                  | 2             |
| 20-24  | Never used     | 49.4            | 935           | 54.1           | 1411          | 54.3           | 1372          | 53.8             | 1420          | 53.5             | 1109          |
|        | Past use < 25  | 64.3            | 254           | 20.7           | 40            | 47.9           | 57            | 62.5             | 34            | 54.3             | 34            |
|        | Past use > 25  | 45.5            | 50            | 0.0            | 5             | 27.8           | 15            | 37.0             | 19            | 100.0            | 2             |
|        | Last year < 25 | 72.2            | 83            | 54.5           | 30            | 42.1           | 29            | 33.3             | 10            | 55.6             | 44            |
|        | Last year > 25 | 58.8            | 166           | 80.0           | 9             | 47.6           | 22            | 42.9             | 10            | 75.0             | 4             |
| 25-29  | Never used     | 22.4            | 1283          | 23.9           | 1897          | 24.1           | 1870          | 24.2             | 1943          | 24.1             | 1562          |
|        | Past use < 25  | 27.9            | 379           | 22.8           | 60            | 26.5           | 66            | 14.7             | 44            | 26.5             | 60            |
|        | Past use > 25  | 20.5            | 95            | 12.5           | 10            | 37.5           | 10            | 21.4             | 10            | 0.0              | 1             |
|        | Last year < 25 | 30.2            | 77            | 22.7           | 30            | 15.4           | 40            | 12.5             | 9             | 26.1             | 31            |
|        | Last year > 25 | 29.0            | 178           | 37.5           | 18            | 5.3            | 24            | 0.0              | 9             | 0.0              | 3             |

**Table 23:** Drug use of those in education by type of current education (1)

|              |                | <i>LBO</i> | <i>MAO</i> | <i>HAO</i> | <i>MBO</i> | <i>HBO</i> | <i>WO</i> | <i>Unw. N</i> |
|--------------|----------------|------------|------------|------------|------------|------------|-----------|---------------|
| Cannabis     | never used     | 10.0       | 15.7       | 25.6       | 21.5       | 17.4       | 9.9       | 4101          |
|              | last year < 25 | 7.2        | 11.6       | 27.1       | 23.2       | 18.8       | 12.2      | 334           |
|              | last year > 25 | 4.4        | 6.0        | 16.9       | 35.5       | 18.6       | 18.6      | 332           |
| Cocaine      | never used     | 8.9        | 13.8       | 23.4       | 22.7       | 19.5       | 11.7      | 5280          |
|              | last year < 25 | 3.8        | 3.8        | 23.1       | 30.8       | 23.1       | 15.4      | 54            |
|              | last year > 25 | 0.0        | 0.0        | 0.0        | 55.6       | 44.4       | 0.0       | 13            |
| Ecstasy      | never used     | 9.0        | 13.8       | 23.4       | 22.5       | 19.6       | 11.7      | 5224          |
|              | last year < 25 | 4.0        | 4.0        | 20.0       | 40.0       | 16.0       | 16.0      | 58            |
|              | last year > 25 | 7.1        | 7.1        | 14.3       | 28.6       | 35.7       | 7.1       | 29            |
| Amphetamines | never used     | 8.9        | 13.8       | 23.4       | 22.5       | 19.8       | 11.6      | 5272          |
|              | last year < 25 | 6.3        | 12.5       | 25.0       | 43.8       | 6.3        | 6.3       | 36            |
|              | last year > 25 | 7.1        | 14.3       | 14.3       | 42.9       | 21.4       | 0.0       | 22            |
| Mushrooms    | never used     | 8.9        | 13.8       | 23.3       | 22.5       | 20.1       | 11.4      | 5176          |
|              | last year < 25 | 3.6        | 7.3        | 25.5       | 29.1       | 14.5       | 20.0      | 125           |
|              | last year > 25 | 0.0        | 66.7       | 0.0        | 0.0        | 33.3       | 0.0       | 5             |

**Tabel 24:** Drug use of those in education by type of current education (2)

|              |                | <i>LBO</i> | <i>MAO</i> | <i>HAO</i> | <i>MBO</i> | <i>HBO</i> | <i>WO</i> |
|--------------|----------------|------------|------------|------------|------------|------------|-----------|
| Cannabis     | never used     | 87.8       | 88.7       | 85.1       | 72.1       | 67.3       | 64.7      |
|              | past use < 25  | 4.2        | 4.5        | 4.8        | 12.6       | 19.3       | 18.2      |
|              | past use > 25  | 1.3        | 0.2        | 0.4        | 2.3        | 3.8        | 3.8       |
|              | last year < 25 | 4.2        | 4.3        | 5.9        | 5.1        | 4.8        | 5.2       |
|              | last year > 25 | 2.6        | 2.3        | 3.8        | 7.9        | 4.8        | 8.1       |
| Cocaine      | never used     | 99.7       | 99.4       | 99.2       | 97.1       | 96.8       | 97.9      |
|              | past use < 25  | 0.0        | 0.4        | 0.1        | 1.2        | 1.4        | 1.2       |
|              | past use > 25  | 0.0        | 0.0        | 0.0        | 0.1        | 0.4        | 0.0       |
|              | last year < 25 | 0.3        | 0.2        | 0.7        | 1.0        | 0.8        | 1.0       |
|              | last year > 25 | 0.0        | 0.0        | 0.0        | 0.6        | 0.6        | 0.0       |
| Ecstasy      | never used     | 99.4       | 98.8       | 98.7       | 95.5       | 96.5       | 97.1      |
|              | past use < 25  | 0.0        | 0.8        | 0.2        | 2.2        | 2.1        | 1.4       |
|              | past use > 25  | 0.0        | 0.0        | 0.2        | 0.6        | 0.1        | 0.2       |
|              | last year < 25 | 0.3        | 0.2        | 0.6        | 1.2        | 0.6        | 1.0       |
|              | last year > 25 | 0.3        | 0.2        | 0.2        | 0.5        | 0.7        | 0.2       |
| Amphetamines | never used     | 99.4       | 98.8       | 98.9       | 95.6       | 97.3       | 96.9      |
|              | past use < 25  | 0.0        | 0.4        | 0.2        | 1.9        | 1.4        | 2.9       |
|              | past use > 25  | 0.0        | 0.0        | 0.1        | 0.9        | 0.7        | 0.0       |
|              | last year < 25 | 0.3        | 0.4        | 0.5        | 0.9        | 0.1        | 0.2       |
|              | last year > 25 | 0.3        | 0.4        | 0.2        | 0.7        | 0.4        | 0.0       |
| Mushrooms    | never used     | 98.1       | 98.4       | 97.3       | 95.2       | 97.9       | 94.3      |
|              | past use < 25  | 1.3        | 0.4        | 1.0        | 2.4        | 0.8        | 3.1       |
|              | past use > 25  | 0.0        | 0.0        | 0.0        | 0.4        | 0.0        | 0.0       |
|              | last year < 25 | 0.6        | 0.8        | 1.7        | 1.9        | 1.1        | 2.6       |
|              | last year > 25 | 0.0        | 0.4        | 0.0        | 0.0        | 0.1        | 0.0       |
|              |                | 654        | 933        | 1568       | 1101       | 664        | 489       |

# WHO ARE DRUG USERS IN THE NETHERLANDS?

**Table 25:** Income by drug use category

|              |                | <i>f750 -</i><br><i>&lt; f750</i> | <i>f1250 -</i><br><i>f1250</i> | <i>f1500 -</i><br><i>f1500</i> | <i>f2000 -</i><br><i>f2000</i> | <i>f2500 -</i><br><i>f2500</i> | <i>f3000 -</i><br><i>f3000</i> | <i>f3000 -</i><br><i>f4000</i> | <i>f4000 -</i><br><i>f5000</i> | <i>&gt; f5000</i> | <i>Unw. N</i> |
|--------------|----------------|-----------------------------------|--------------------------------|--------------------------------|--------------------------------|--------------------------------|--------------------------------|--------------------------------|--------------------------------|-------------------|---------------|
| Cannabis     | Never used     | 12.4                              | 9.8                            | 10.5                           | 12.7                           | 13.0                           | 13.7                           | 15.4                           | 7.1                            | 5.3               | 10916         |
|              | Past use < 25  | 6.6                               | 7.1                            | 6.5                            | 10.3                           | 18.0                           | 15.9                           | 20.3                           | 9.0                            | 6.3               | 1718          |
|              | Past use > 25  | 3.4                               | 5.6                            | 7.0                            | 14.6                           | 19.3                           | 13.9                           | 23.5                           | 8.3                            | 4.5               | 569           |
|              | Last year < 25 | 10.4                              | 11.5                           | 12.6                           | 8.8                            | 20.9                           | 9.3                            | 12.1                           | 6.6                            | 7.7               | 265           |
|              | Last year > 25 | 9.1                               | 10.7                           | 13.1                           | 15.9                           | 19.8                           | 14.4                           | 10.2                           | 2.9                            | 3.9               | 625           |
| Cocaine      | Never used     | 11.6                              | 9.5                            | 10.1                           | 12.6                           | 13.7                           | 13.9                           | 16.0                           | 7.3                            | 5.4               | 13530         |
|              | Past use < 25  | 8.0                               | 8.4                            | 9.3                            | 12.0                           | 21.8                           | 16.0                           | 14.7                           | 5.3                            | 4.4               | 357           |
|              | Past use > 25  | 10.0                              | 4.0                            | 10.0                           | 26.0                           | 24.0                           | 4.0                            | 8.0                            | 8.0                            | 6.0               | 80            |
|              | Last year < 25 | 4.3                               | 17.0                           | 10.6                           | 12.8                           | 36.2                           | 4.3                            | 8.5                            | 2.1                            | 4.3               | 81            |
|              | Last year > 25 | 2.9                               | 22.9                           | 17.1                           | 14.3                           | 20.0                           | 11.4                           | 8.6                            | 2.9                            | 0.0               | 65            |
| Ecstasy      | Never used     | 11.6                              | 9.5                            | 10.1                           | 12.5                           | 13.8                           | 13.8                           | 16.0                           | 7.3                            | 5.4               | 13716         |
|              | Past use < 25  | 8.3                               | 6.0                            | 10.5                           | 16.5                           | 21.8                           | 15.8                           | 12.0                           | 3.0                            | 6.0               | 209           |
|              | Past use > 25  | 4.8                               | 4.8                            | 0.0                            | 19.0                           | 47.6                           | 19.0                           | 4.8                            | 0.0                            | 0.0               | 25            |
|              | Last year < 25 | 10.3                              | 17.2                           | 17.2                           | 17.2                           | 13.8                           | 6.9                            | 12.1                           | 3.4                            | 1.7               | 111           |
|              | Last year > 25 | 4.3                               | 4.3                            | 13.0                           | 17.4                           | 34.8                           | 13.0                           | 8.7                            | 4.3                            | 0.0               | 50            |
| Amphetamines | Never used     | 11.6                              | 9.5                            | 10.1                           | 12.5                           | 13.8                           | 13.8                           | 16.0                           | 7.3                            | 5.4               | 13701         |
|              | Past use < 25  | 2.1                               | 9.4                            | 8.9                            | 16.8                           | 17.8                           | 15.2                           | 18.8                           | 6.3                            | 4.7               | 257           |
|              | Past use > 25  | 9.8                               | 8.2                            | 18.0                           | 9.8                            | 26.2                           | 18.0                           | 4.9                            | 4.9                            | 0.0               | 92            |
|              | Last year < 25 | 11.1                              | 5.6                            | 11.1                           | 16.7                           | 44.4                           | 0.0                            | 5.6                            | 0.0                            | 5.6               | 32            |
|              | Last year > 25 | 16.7                              | 0.0                            | 22.2                           | 16.7                           | 11.1                           | 16.7                           | 0.0                            | 0.0                            | 16.7              | 30            |
| Mushrooms    | Never used     | 11.5                              | 9.5                            | 10.0                           | 12.5                           | 13.8                           | 13.8                           | 16.2                           | 7.3                            | 5.4               | 11822         |
|              | Past use < 25  | 7.0                               | 9.8                            | 13.3                           | 14.0                           | 21.0                           | 20.3                           | 7.7                            | 1.4                            | 5.6               | 226           |
|              | Past use > 25  | 0.0                               | 25.0                           | 75.0                           | 0.0                            | 0.0                            | 0.0                            | 0.0                            | 0.0                            | 0.0               | 10            |
|              | Last year < 25 | 3.2                               | 16.1                           | 17.7                           | 19.4                           | 24.2                           | 9.7                            | 8.1                            | 1.6                            | 0.0               | 92            |
|              | Last year > 25 | 0.0                               | 14.3                           | 28.6                           | 14.3                           | 0.0                            | 42.9                           | 0.0                            | 0.0                            | 0.0               | 9             |

**Table 26:** Income of cannabis users by age group

|       |                | <i>f750 -</i><br><i>&lt; f750</i> | <i>f1250 -</i><br><i>f1250</i> | <i>f1500 -</i><br><i>f1500</i> | <i>f2000 -</i><br><i>f2000</i> | <i>f2500 -</i><br><i>f2500</i> | <i>f3000 -</i><br><i>f3000</i> | <i>f3000 -</i><br><i>f4000</i> | <i>f4000 -</i><br><i>f5000</i> | <i>&gt; f5000</i> | <i>Unw. N</i> |
|-------|----------------|-----------------------------------|--------------------------------|--------------------------------|--------------------------------|--------------------------------|--------------------------------|--------------------------------|--------------------------------|-------------------|---------------|
| 20-24 | never used     | 15.7                              | 19.9                           | 14.8                           | 16.6                           | 20.8                           | 7.5                            | 4.9                            |                                |                   | 511           |
|       | past use < 25  | 17.2                              | 30.2                           | 7.8                            | 17.2                           | 19.0                           | 7.8                            | 0.9                            |                                |                   | 165           |
|       | past use > 25  | 3.4                               | 34.5                           | 6.9                            | 13.8                           | 41.4                           |                                |                                |                                |                   | 35            |
|       | last year < 25 | 15.0                              | 35.0                           | 5.0                            | 15.0                           | 27.5                           | 2.5                            |                                |                                |                   | 59            |
|       | last year > 25 | 12.1                              | 27.3                           | 18.2                           | 22.7                           | 18.2                           |                                | 1.5                            |                                |                   | 105           |
|       |                |                                   |                                |                                |                                |                                |                                |                                |                                |                   |               |
| 25-29 | never used     | 10.6                              | 5.7                            | 5.7                            | 14.9                           | 27.2                           | 21.2                           | 12.0                           | 1.6                            | 1.0               | 1051          |
|       | past use < 25  | 5.0                               | 8.2                            | 5.0                            | 12.9                           | 33.9                           | 20.7                           | 13.5                           | 0.6                            | 0.3               | 340           |
|       | past use > 25  | 4.3                               | 7.1                            | 11.4                           | 12.9                           | 35.7                           | 11.4                           | 17.1                           |                                |                   | 88            |
|       | last year < 25 | 16.7                              | 5.6                            | 19.4                           | 13.9                           | 25.0                           | 13.9                           | 2.8                            | 2.8                            |                   | 69            |
|       | last year > 25 | 1.0                               | 12.1                           | 11.1                           | 15.2                           | 31.3                           | 22.2                           | 6.1                            | 1.0                            |                   | 157           |
| 30-59 | never used     | 15.5                              | 6.8                            | 6.5                            | 10.4                           | 11.8                           | 14.5                           | 19.2                           | 9.0                            | 6.5               | 6190          |
|       | past use < 25  | 5.5                               | 3.8                            | 5.9                            | 8.7                            | 13.2                           | 16.0                           | 25.2                           | 12.8                           | 8.9               | 1141          |
|       | past use > 25  | 2.9                               | 2.4                            | 5.9                            | 14.7                           | 14.4                           | 15.9                           | 27.1                           | 10.9                           | 5.9               | 435           |
|       | last year < 25 | 4.3                               | 2.2                            | 15.1                           | 4.3                            | 18.3                           | 9.7                            | 22.6                           | 11.8                           | 11.8              | 115           |
|       | last year > 25 | 9.9                               | 3.9                            | 12.8                           | 14.3                           | 16.3                           | 15.8                           | 15.8                           | 4.4                            | 6.9               | 323           |

**Table 27:** Social visits by drug use category

|           |                   | <i>Daily</i> | <i>2-3 pw</i> | <i>Weekly</i> | <i>Monthly</i> | <i>Less often</i> | <i>Unw. N</i> |
|-----------|-------------------|--------------|---------------|---------------|----------------|-------------------|---------------|
| Cannabis  | non-cannabis user | 27.3         | 29.2          | 28.8          | 9.2            | 5.4               | 15765         |
|           | past use < 25     | 28.7         | 30.2          | 28.1          | 8.1            | 4.9               | 1908          |
|           | past use > 25     | 23.5         | 29.2          | 29.8          | 10.8           | 6.8               | 579           |
|           | last year < 25    | 45.1         | 28.1          | 17.3          | 7.0            | 2.4               | 560           |
|           | last year > 25    | 44.4         | 25.0          | 19.6          | 4.9            | 6.1               | 876           |
| Cocaine   | non-cocaine user  | 28.0         | 29.1          | 28.5          | 9.0            | 5.4               | 19094         |
|           | past use < 25     | 32.7         | 30.5          | 22.3          | 9.3            | 5.2               | 369           |
|           | past use > 25     | 15.7         | 47.1          | 15.7          | 13.7           | 7.9               | 77            |
|           | last year < 25    | 41.9         | 25.7          | 13.5          | 12.2           | 6.8               | 118           |
|           | last year > 25    | 45.1         | 31.4          | 7.8           | 7.8            | 7.8               | 78            |
| Ecstasy   | non-ecstasy user  | 27.8         | 29.2          | 28.5          | 9.0            | 5.4               | 19183         |
|           | past use < 25     | 36.2         | 28.0          | 23.7          | 8.2            | 3.9               | 269           |
|           | past use > 25     | 41.9         | 20.9          | 9.3           | 23.3           | 4.7               | 47            |
|           | last year < 25    | 58.5         | 23.2          | 8.5           | 3.7            | 6.1               | 147           |
|           | last year > 25    | 48.2         | 41.1          | 5.4           | 1.8            | 3.6               | 85            |
| Amphetam. | non-amph. user    | 28.1         | 29.2          | 28.4          | 9.0            | 5.4               | 19212         |
|           | past use < 25     | 24.1         | 34.5          | 28.9          | 8.2            | 4.3               | 293           |
|           | past use > 25     | 33.3         | 25.0          | 19.8          | 16.7           | 5.2               | 114           |
|           | last year < 25    | 65.6         | 9.4           | 12.5          | 3.1            | 9.4               | 60            |
|           | last year > 25    | 52.8         | 30.6          | 11.1          | 0.0            | 5.6               | 55            |
| Mushrooms | non-mush. user    | 27.9         | 29.2          | 28.4          | 9.0            | 5.4               | 19164         |
|           | past use < 25     | 38.4         | 29.9          | 21.3          | 4.3            | 6.2               | 328           |
|           | last year < 25    | 47.2         | 27.2          | 18.4          | 6.4            | 0.8               | 11            |
|           | past use > 25     | 33.3         | 0.0           | 22.2          | 44.4           | 0.0               | 220           |
|           | last year > 25    | 62.5         | 0.0           | 0.0           | 37.5           | 0.0               | 13            |

**Table 28:** Evenings spent at home by drug use category

|             |                | <i>&lt; 3</i> | <i>3 - 4</i> | <i>5 - 7</i> | <i>Unw. n</i> |
|-------------|----------------|---------------|--------------|--------------|---------------|
| Cannabis    | never          | 7.1           | 28.2         | 64.7         | 17350         |
|             | past use < 25  | 14.2          | 41.5         | 44.3         | 2237          |
|             | past use > 25  | 13.6          | 32.4         | 54.1         | 662           |
|             | last year < 25 | 19.5          | 45.5         | 35.0         | 631           |
|             | last year > 25 | 21.9          | 39.6         | 38.5         | 984           |
| Cocaine     | never          | 8.3           | 29.9         | 61.8         | 21199         |
|             | past use < 25  | 19.7          | 34.7         | 45.6         | 415           |
|             | past use > 25  | 11.3          | 34.0         | 54.7         | 85            |
|             | last year < 25 | 27.3          | 44.2         | 28.6         | 131           |
|             | last year > 25 | 25.0          | 25.0         | 50.0         | 84            |
| Ecstasy     | never          | 8.2           | 29.8         | 62.0         | 21292         |
|             | past use < 25  | 20.0          | 39.5         | 40.5         | 299           |
|             | past use > 25  | 50.0          | 27.3         | 22.7         | 52            |
|             | last year < 25 | 23.5          | 58.8         | 17.6         | 172           |
|             | last year > 25 | 46.6          | 24.1         | 29.3         | 94            |
| Amphetamine | never          | 8.3           | 30.0         | 61.8         | 21335         |
|             | past use < 25  | 17.0          | 34.5         | 48.5         | 328           |
|             | past use > 25  | 35.7          | 22.4         | 41.8         | 120           |
|             | last year < 25 | 25.7          | 60.0         | 14.3         | 69            |
|             | last year > 25 | 21.6          | 37.8         | 40.5         | 59            |
| Mushrooms   | never          | 8.2           | 29.8         | 62.0         | 19146         |
|             | past use < 25  | 26.5          | 34.1         | 39.3         | 327           |
|             | past use > 25  |               | 50.0         | 50.0         | 11            |
|             | last year < 25 | 29.6          | 42.4         | 28.0         | 219           |
|             | last year > 25 |               | 37.5         | 62.5         | 13            |



# WHO ARE DRUG USERS IN THE NETHERLANDS?

**Table 30:** Frequency of visiting cafes during the past 4 weeks

|             |                   | <i>Never</i> | <i>Rarely</i> | <i>Moderate</i> | <i>Frequent</i> | <i>Unw.n</i> |
|-------------|-------------------|--------------|---------------|-----------------|-----------------|--------------|
| Cannabis    | non-cannabis user | 70.7         | 19.5          | 8.3             | 1.5             | 17340        |
|             | past use < 25     | 41.1         | 31.8          | 21.1            | 6.0             | 2235         |
|             | past use > 25     | 41.4         | 34.3          | 20.4            | 3.9             | 667          |
|             | last year < 25    | 20.5         | 37.3          | 31.0            | 11.3            | 630          |
|             | last year > 25    | 17.9         | 35.5          | 33.5            | 13.1            | 986          |
| Cocaine     | non-cocaine user  | 65.9         | 21.4          | 10.5            | 2.2             | 21190        |
|             | past use < 25     | 30.8         | 29.7          | 28.3            | 11.2            | 417          |
|             | past use > 25     | 18.7         | 33.3          | 28.0            | 20.0            | 85           |
|             | last year < 25    | 19.6         | 47.1          | 25.5            | 7.8             | 131          |
|             | last year > 25    | 65.1         | 21.7          | 10.8            | 2.4             | 84           |
| Ecstasy     | non-ecstasy user  | 60.4         | 23.4          | 13.0            | 3.2             | 21286        |
|             | past use < 25     | 14.7         | 33.4          | 38.1            | 13.7            | 299          |
|             | past use > 25     | 21.2         | 28.8          | 38.5            | 11.5            | 52           |
|             | last year < 25    | 9.3          | 29.7          | 41.3            | 19.8            | 172          |
|             | last year > 25    | 11.8         | 40.9          | 31.2            | 16.1            | 93           |
| Amphetamine | non-amph. user    | 65.7         | 21.6          | 10.5            | 2.3             | 21325        |
|             | past use < 25     | 38.8         | 28.3          | 26.6            | 6.3             | 330          |
|             | past use > 25     | 34.7         | 23.5          | 28.6            | 13.3            | 121          |
|             | last year < 25    | 5.7          | 31.4          | 48.6            | 14.3            | 69           |
|             | last year > 25    | 35.1         | 27.0          | 24.3            | 13.5            | 59           |
| Mushrooms   | non-mush user     | 66.1         | 21.4          | 10.3            | 2.2             | 19141        |
|             | past use < 25     | 18.4         | 35.4          | 35.4            | 10.8            | 328          |
|             | past use > 25     | 11.1         | 77.8          | 11.1            | 0.0             | 11           |
|             | last year < 25    | 11.5         | 32.8          | 38.5            | 17.2            | 218          |
|             | last year > 25    | 50.0         | 37.5          | 0.0             | 12.5            | 13           |

**Table 31:** Frequency of visiting restaurants during the past 4 weeks

|             |                   | <i>Never</i> | <i>Rarely</i> | <i>Moderate</i> | <i>Frequent</i> | <i>Unw.n</i> |
|-------------|-------------------|--------------|---------------|-----------------|-----------------|--------------|
| Cannabis    | non-cannabis user | 47.8         | 20.8          | 20.2            | 11.2            | 17339        |
|             | past use < 25     | 29.7         | 17.9          | 28.9            | 23.5            | 2235         |
|             | past use > 25     | 34.2         | 18.7          | 27.4            | 19.7            | 663          |
|             | last year < 25    | 25.5         | 19.7          | 28.7            | 26.1            | 627          |
|             | last year > 25    | 24.7         | 15.1          | 29.4            | 30.8            | 986          |
| Cocaine     | non-cocaine user  | 45.3         | 20.4          | 21.4            | 12.8            | 21185        |
|             | past use < 25     | 20.8         | 16.8          | 28.5            | 33.9            | 415          |
|             | past use > 25     | 40.4         | 15.4          | 19.2            | 25.0            | 85           |
|             | last year < 25    | 22.1         | 26.0          | 20.8            | 31.2            | 132          |
|             | last year > 25    | 32.7         | 3.8           | 25.0            | 38.5            | 83           |
| Ecstasy     | non-ecstasy user  | 45.3         | 20.5          | 21.4            | 12.8            | 21281        |
|             | past use < 25     | 18.8         | 13.0          | 33.8            | 34.3            | 297          |
|             | past use > 25     | 17.1         | 9.8           | 26.8            | 46.3            | 50           |
|             | last year < 25    | 17.6         | 16.5          | 23.5            | 42.4            | 172          |
|             | last year > 25    | 25.9         | 19.0          | 24.1            | 31.0            | 94           |
| Amphetamine | non-amph. user    | 45.2         | 20.4          | 21.5            | 12.9            | 21319        |
|             | past use < 25     | 26.7         | 18.6          | 24.2            | 30.5            | 329          |
|             | past use > 25     | 28.9         | 13.4          | 25.8            | 32.0            | 120          |
|             | last year < 25    | 17.1         | 20.0          | 28.6            | 34.3            | 69           |
|             | last year > 25    | 29.7         | 29.7          | 13.5            | 27.0            | 59           |
| Mushrooms   | non-mush user     | 45.4         | 20.5          | 21.3            | 12.8            | 19135        |
|             | past use < 25     | 22.2         | 14.5          | 31.9            | 31.4            | 325          |
|             | past use > 25     | 50.0         |               | 12.5            | 37.5            | 11           |
|             | last year < 25    | 16.8         | 12.0          | 28.8            | 42.4            | 218          |
|             | last year > 25    | 33.3         | 11.1          | 11.1            | 44.4            | 13           |

**Table 32:** Frequency of cannabis users visiting cafes during the past 4 weeks by age category

|       |                   | <i>Never</i> | <i>Rarely</i> | <i>Moderate</i> | <i>Frequent</i> | <i>Unw.n</i> |
|-------|-------------------|--------------|---------------|-----------------|-----------------|--------------|
| 12-15 | non-cannabis user | 70.2         | 23.4          | 5.9             | 0.5             | 2094         |
|       | past use < 25     | 40.0         | 40.0          | 16.0            | 4.0             | 63           |
|       | past use > 25     | 0.0          | 100.0         | 0.0             | 0.0             | 1            |
|       | last year < 25    | 32.7         | 40.8          | 22.4            | 4.1             | 102          |
|       | last year > 25    | 25.0         | 33.3          | 33.3            | 8.3             | 35           |
| 16-19 | non-cannabis user | 26.7         | 38.5          | 30.2            | 4.6             | 2053         |
|       | past use < 25     | 4.5          | 33.3          | 52.3            | 9.9             | 250          |
|       | past use > 25     | 9.5          | 38.1          | 47.6            | 4.8             | 58           |
|       | last year < 25    | 7.8          | 34.3          | 45.1            | 12.7            | 242          |
|       | last year > 25    | 9.7          | 27.2          | 53.4            | 9.7             | 267          |
| 20-24 | non-cannabis user | 29.6         | 37.0          | 27.3            | 6.1             | 933          |
|       | past use < 25     | 12.5         | 36.6          | 36.3            | 14.7            | 254          |
|       | past use > 25     | 25.0         | 36.4          | 29.5            | 9.1             | 50           |
|       | last year < 25    | 2.8          | 34.7          | 41.7            | 20.8            | 83           |
|       | last year > 25    | 8.2          | 39.5          | 29.9            | 22.4            | 165          |
| 25-29 | non-cannabis user | 50.6         | 33.0          | 13.9            | 2.6             | 1281         |
|       | past use < 25     | 29.8         | 35.2          | 28.8            | 6.2             | 377          |
|       | past use > 25     | 15.7         | 43.4          | 38.6            | 2.4             | 95           |
|       | last year < 25    | 30.2         | 34.0          | 26.4            | 9.4             | 77           |
|       | last year > 25    | 16.9         | 37.9          | 33.1            | 12.1            | 178          |
| 30-34 | non-cannabis user | 60.5         | 28.6          | 9.3             | 1.6             | 1317         |
|       | past use < 25     | 42.1         | 39.9          | 12.9            | 5.0             | 359          |
|       | past use > 25     | 59.3         | 30.8          | 7.7             | 2.2             | 114          |
|       | last year < 25    | 31.6         | 50.0          | 15.8            | 2.6             | 43           |
|       | last year > 25    | 16.9         | 45.8          | 30.5            | 6.8             | 107          |
| 35-39 | non-cannabis user | 69.0         | 23.6          | 6.7             | 0.7             | 1348         |
|       | past use < 25     | 49.8         | 33.2          | 12.4            | 4.6             | 292          |
|       | past use > 25     | 37.5         | 40.0          | 18.8            | 3.8             | 119          |
|       | last year < 25    | 14.3         | 61.9          | 19.0            | 4.8             | 25           |
|       | last year > 25    | 26.7         | 33.3          | 29.3            | 10.7            | 101          |
| 40-49 | non-cannabis user | 74.8         | 18.4          | 5.9             | 0.9             | 2567         |
|       | past use < 25     | 66.7         | 21.2          | 10.5            | 1.6             | 415          |
|       | past use > 25     | 50.3         | 29.1          | 16.6            | 4.0             | 201          |
|       | last year < 25    | 41.9         | 32.3          | 9.7             | 16.1            | 40           |
|       | last year > 25    | 39.1         | 28.1          | 21.9            | 10.9            | 106          |
| 50-59 | non-cannabis user | 82.0         | 12.1          | 4.6             | 1.3             | 2115         |
|       | past use < 25     | 64.4         | 22.1          | 11.4            | 2.0             | 171          |
|       | past use > 25     | 68.2         | 22.7          | 4.5             | 4.5             | 26           |
|       | last year < 25    | 30.0         | 20.0          | 50.0            | 0.0             | 14           |
|       | last year > 25    | 41.2         | 35.3          | 23.5            | 0.0             | 25           |

# WHO ARE DRUG USERS IN THE NETHERLANDS?

**Table 33:** Frequency of cannabis users visiting restaurants by age category

|        |                   | <i>Never</i> | <i>Rarely</i> | <i>Moderate</i> | <i>Frequent</i> | <i>Unw.n</i> |
|--------|-------------------|--------------|---------------|-----------------|-----------------|--------------|
| 12-15. | non-cannabis user | 53.0         | 21.9          | 16.3            | 8.8             | 2091         |
|        | past use < 25     | 44.0         | 16.0          | 32.0            | 8.0             | 63           |
|        | past use > 25     | 0.0          | 0.0           | 100.0           | 0.0             | 1            |
|        | last year < 25    | 32.7         | 28.6          | 14.3            | 24.5            | 102          |
|        | last year > 25    | 33.3         | 33.3          | 16.7            | 16.7            | 35           |
| 16-19  | non-cannabis user | 36.5         | 22.3          | 25.9            | 15.3            | 2052         |
|        | past use < 25     | 26.4         | 14.5          | 41.8            | 17.3            | 251          |
|        | past use > 25     | 26.3         | 15.8          | 21.1            | 36.8            | 56           |
|        | last year < 25    | 30.1         | 24.3          | 27.2            | 18.4            | 242          |
|        | last year > 25    | 24.8         | 15.8          | 29.7            | 29.7            | 266          |
| 20-24  | non-cannabis user | 30.9         | 20.5          | 29.3            | 19.3            | 930          |
|        | past use < 25     | 24.0         | 11.6          | 37.5            | 27.0            | 251          |
|        | past use > 25     | 17.8         | 35.6          | 24.4            | 22.2            | 50           |
|        | last year < 25    | 12.9         | 15.7          | 27.1            | 44.3            | 82           |
|        | last year > 25    | 19.6         | 13.5          | 35.1            | 31.8            | 166          |
| 25-29  | non-cannabis user | 31.1         | 21.7          | 24.3            | 22.9            | 1283         |
|        | past use < 25     | 26.7         | 16.2          | 30.5            | 26.7            | 380          |
|        | past use > 25     | 20.2         | 16.7          | 40.5            | 22.6            | 95           |
|        | last year < 25    | 32.1         | 20.8          | 22.6            | 24.5            | 75           |
|        | last year > 25    | 22.4         | 13.6          | 30.4            | 33.6            | 178          |
| 30-34  | non-cannabis user | 39.4         | 21.1          | 23.4            | 16.1            | 1319         |
|        | past use < 25     | 25.9         | 19.1          | 28.1            | 27.0            | 358          |
|        | past use > 25     | 51.1         | 18.9          | 14.4            | 15.6            | 114          |
|        | last year < 25    | 21.6         | 13.5          | 32.4            | 32.4            | 43           |
|        | last year > 25    | 28.3         | 15.0          | 28.3            | 28.3            | 107          |
| 35-39  | non-cannabis user | 38.0         | 23.5          | 26.3            | 12.2            | 1345         |
|        | past use < 25     | 29.3         | 20.2          | 28.5            | 21.9            | 292          |
|        | past use > 25     | 31.3         | 20.0          | 23.8            | 25.0            | 119          |
|        | last year < 25    | 27.3         | 13.6          | 50.0            | 9.1             | 25           |
|        | last year > 25    | 27.6         | 17.1          | 21.1            | 34.2            | 102          |
| 40-49  | non-cannabis user | 43.4         | 23.8          | 22.9            | 9.9             | 2567         |
|        | past use < 25     | 38.5         | 20.3          | 20.3            | 20.9            | 415          |
|        | past use > 25     | 36.0         | 16.0          | 30.9            | 17.1            | 200          |
|        | last year < 25    | 6.7          | 20.0          | 46.7            | 26.7            | 40           |
|        | last year > 25    | 31.3         | 14.1          | 28.1            | 26.6            | 106          |
| 50-59  | non-cannabis user | 48.2         | 21.8          | 20.3            | 9.7             | 2118         |
|        | past use < 25     | 30.7         | 23.3          | 25.3            | 20.7            | 171          |
|        | past use > 25     | 52.2         | 17.4          | 21.7            | 8.7             | 26           |
|        | last year < 25    | 25.0         | 0.0           | 62.5            | 12.5            | 14           |
|        | last year > 25    | 31.3         | 18.8          | 18.8            | 31.3            | 24           |